

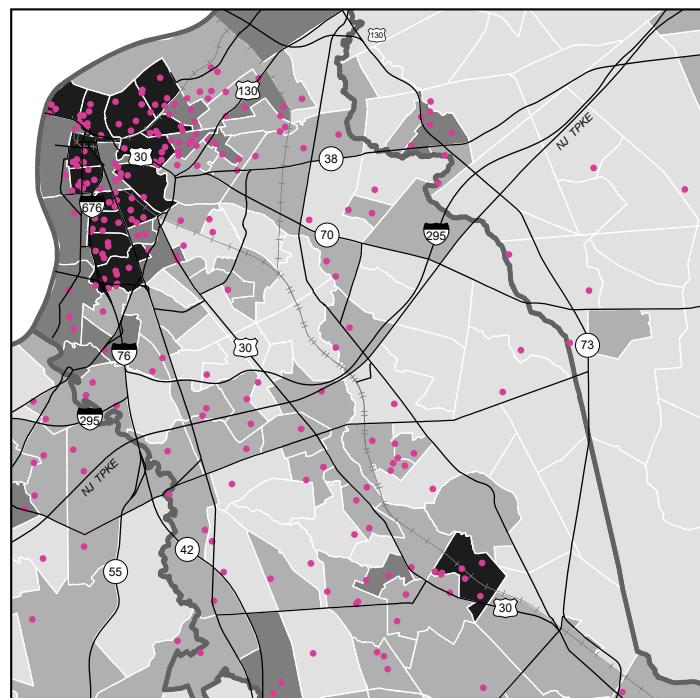


APPENDIX G

Environmental Justice Appendix

This page is intentionally left blank.

Equity Analysis: Concentrations of Low Income Populations



Communities of Concern Concentration
by Census Tract: Low Income Populations

- No Data
- Well Below Average
- Below Average
- Average
- Above Average
- Well Above Average

Source: U.S. Census 2017-2021 American
Community Survey 5-Year Estimates

• Persons in Poverty (1 Dot = 250 Persons)

Source: U.S. Census 2017-2021 American
Community Survey 5-Year Estimates

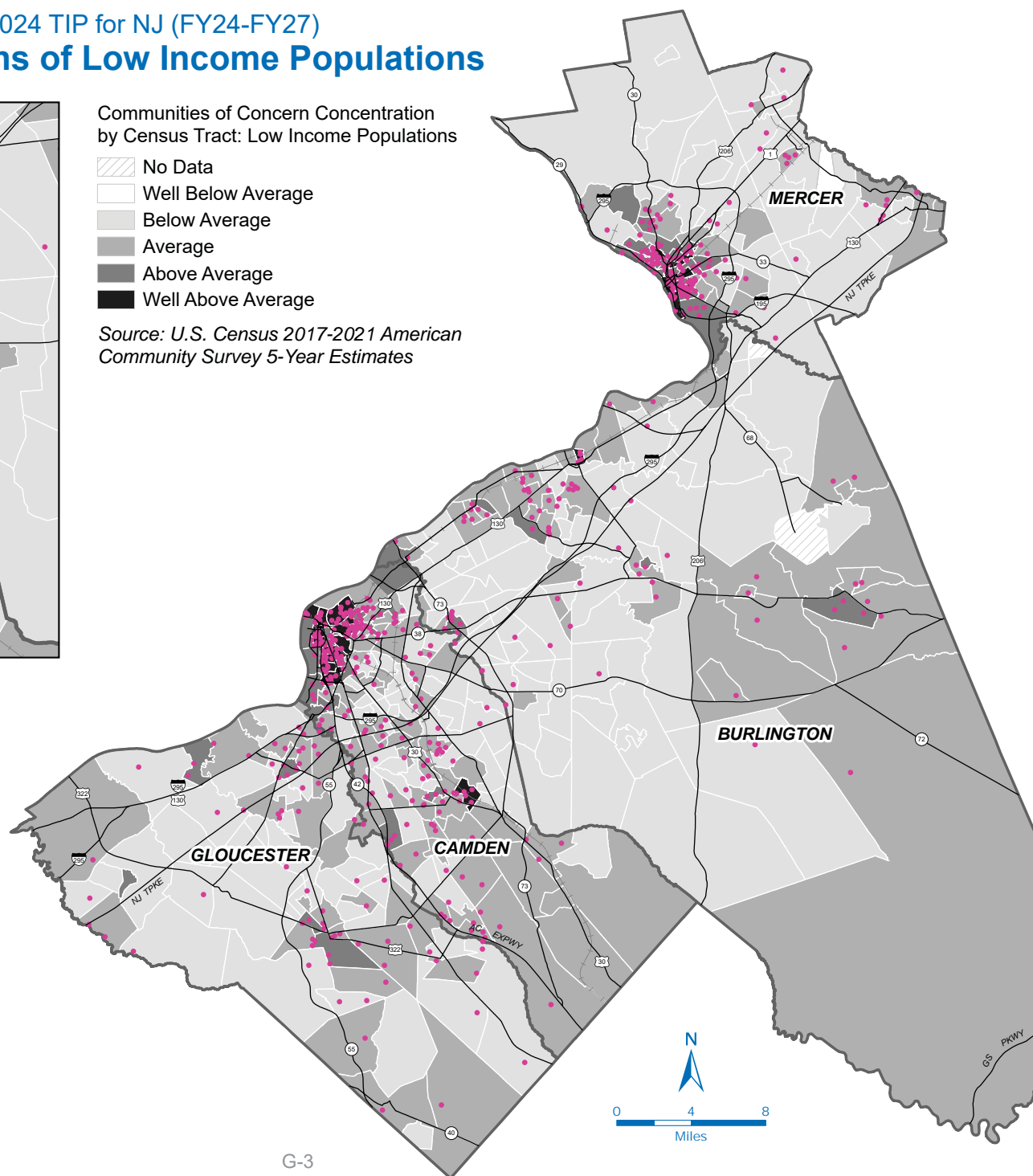
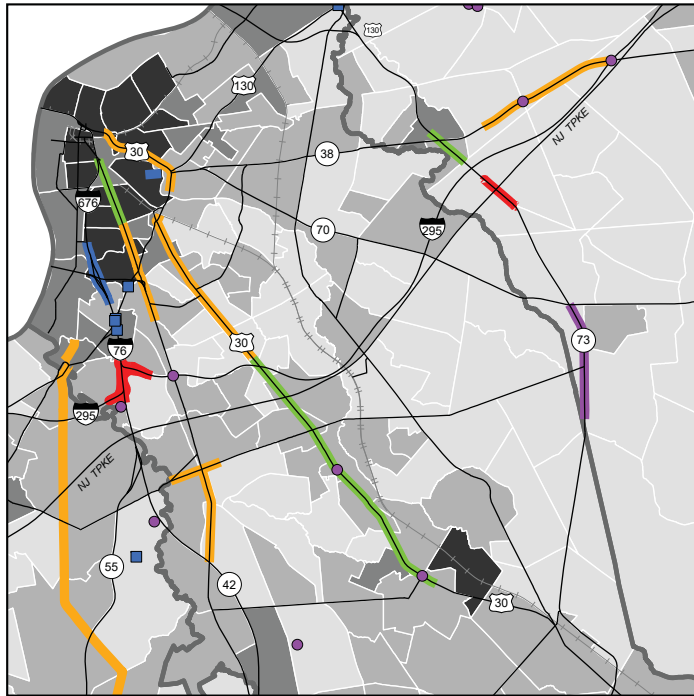


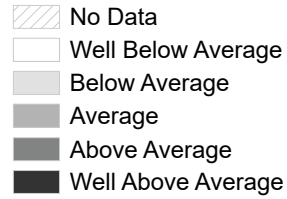
Figure G-1

Equity Analysis: Concentrations of Low Income Populations

NEW JERSEY
HIGHWAY PROGRAM



Communities of Concern Concentration
by Census Tract: Low Income Populations



Source: U.S. Census 2017-2021 American
Community Survey 5-Year Estimates

DRAFT DVRPC FY2024 TIP for NJ (FY24-27)*

- Intersection/Interchange Improvement
- Bicycle/Pedestrian Improvement
- Bridge Repair/Replacement
- Roadway New Capacity
- Roadway Rehabilitation
- Streetscape
- Other

* Not all TIP projects can be mapped ("Unmappable")
due to the scale and nature of the improvement.

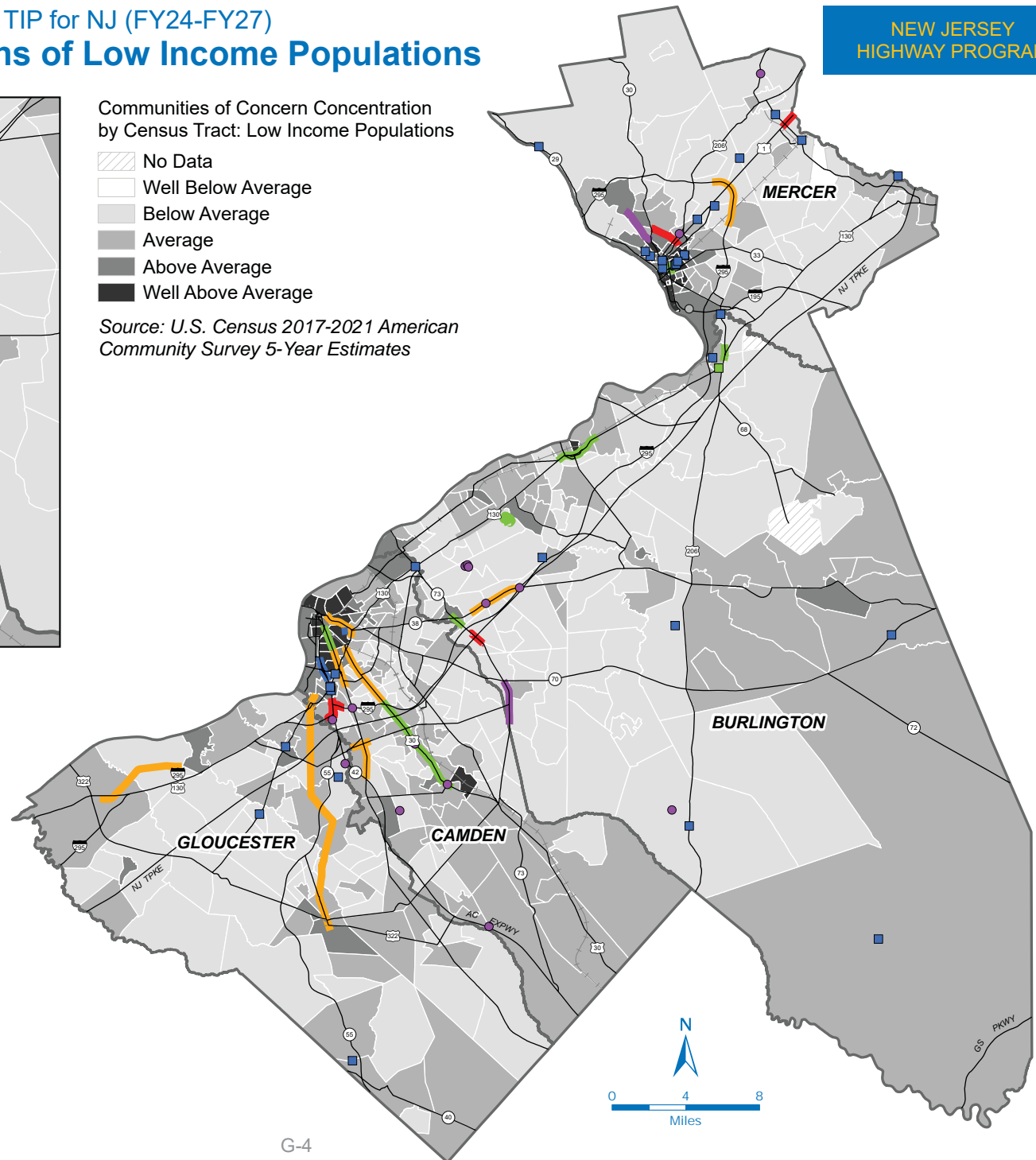


Figure G-2

Equity Analysis: Concentrations of Low Income Populations

NEW JERSEY REGIONAL
PUBLIC TRANSIT
PROGRAM



Communities of Concern Concentration
by Census Tract: Low Income Populations

- No Data
- Well Below Average
- Below Average
- Average
- Above Average
- Well Above Average

Source: U.S. Census 2017-2021 American
Community Survey 5-Year Estimates

DRAFT DVRPC FY2024 TIP for NJ (FY24-27)*

■ / — Transit Project

* Not all TIP projects can be mapped ("Unmappable")
due to the scale and nature of the improvement.

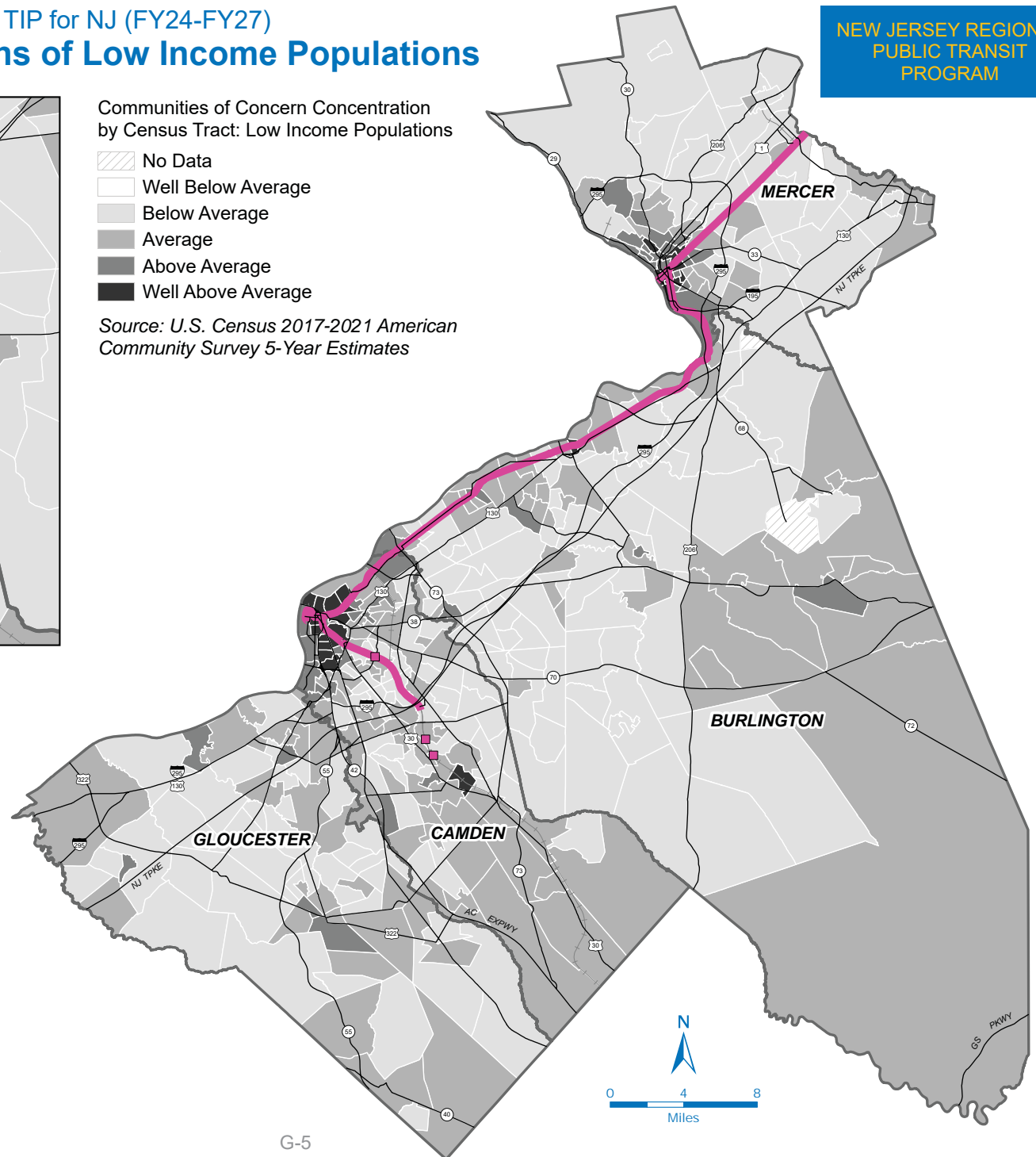
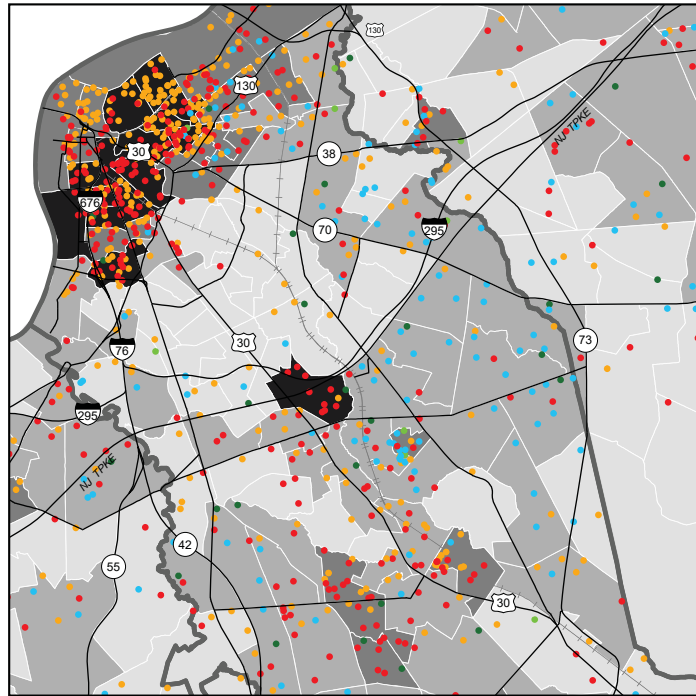
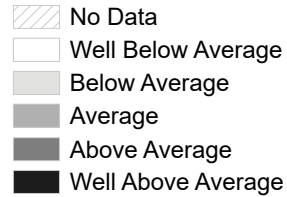


Figure G-3

Equity Analysis: Concentrations of Racial Minority Populations



Communities of Concern Concentration
by Census Tract: Racial Minority Populations



Source: U.S. Census 2017-2021 American
Community Survey 5-Year Estimates

Minority Populations (1 Dot = 250 Persons)

- Black or African American, Non-Hispanic
- Asian alone, Non-Hispanic
- Hispanic
- American Indian and Alaska Native, Non-Hispanic
- Native Hawaiian and Other Pacific Islander, Non-Hispanic
- Two or more races, Non-Hispanic
- Some other race, Non-Hispanic

Source: U.S. Census 2017-2021 American
Community Survey 5-Year Estimates

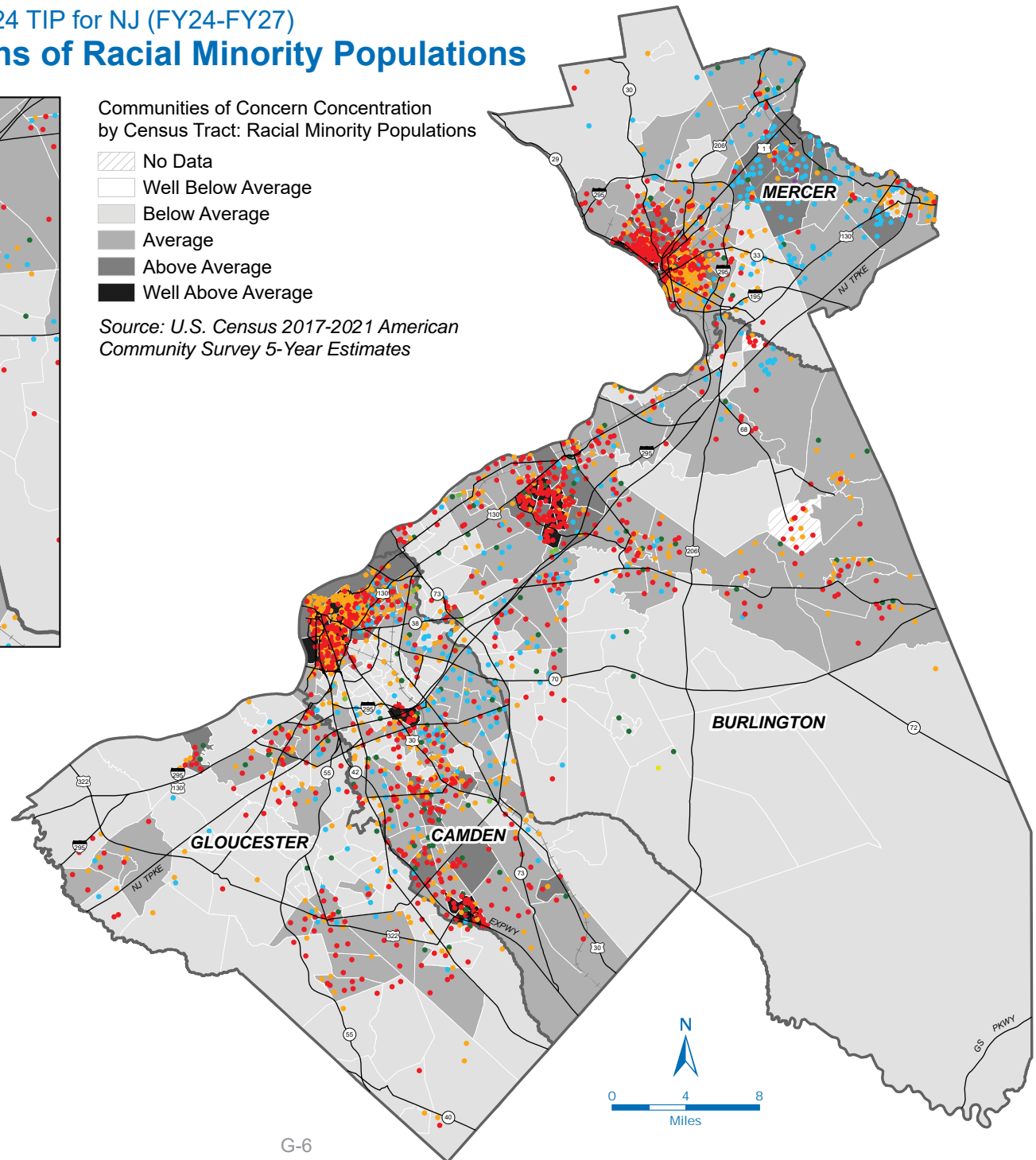
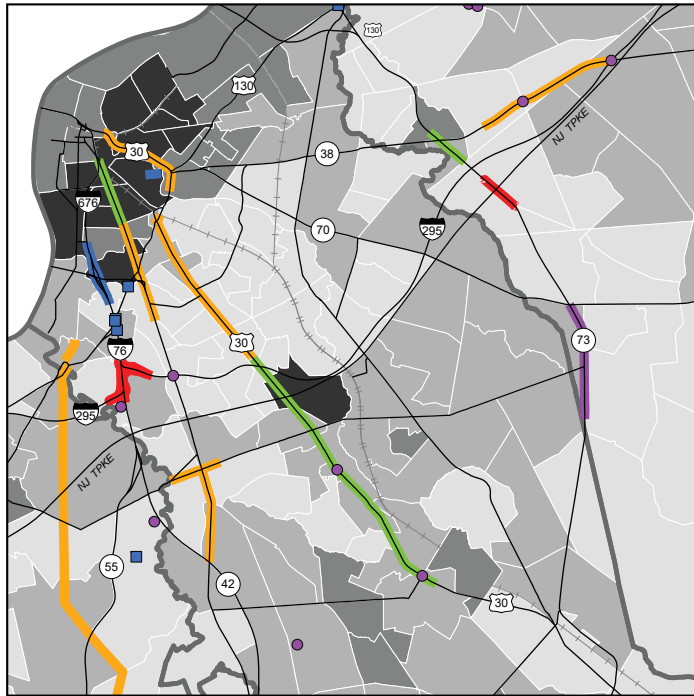


Figure G-4

Equity Analysis: Concentrations of Racial Minority Populations



Communities of Concern Concentration
by Census Tract: Racial Minority Populations

- No Data
- Well Below Average
- Below Average
- Average
- Above Average
- Well Above Average

Source: U.S. Census 2017-2021 American
Community Survey 5-Year Estimates

DRAFT DVRPC FY2024 TIP for NJ (FY24-27)*

- Intersection/Interchange Improvement
- Bicycle/Pedestrian Improvement
- Bridge Repair/Replacement
- Roadway New Capacity
- Roadway Rehabilitation
- Streetscape
- Other

* Not all TIP projects can be mapped ("Unmappable")
due to the scale and nature of the improvement.

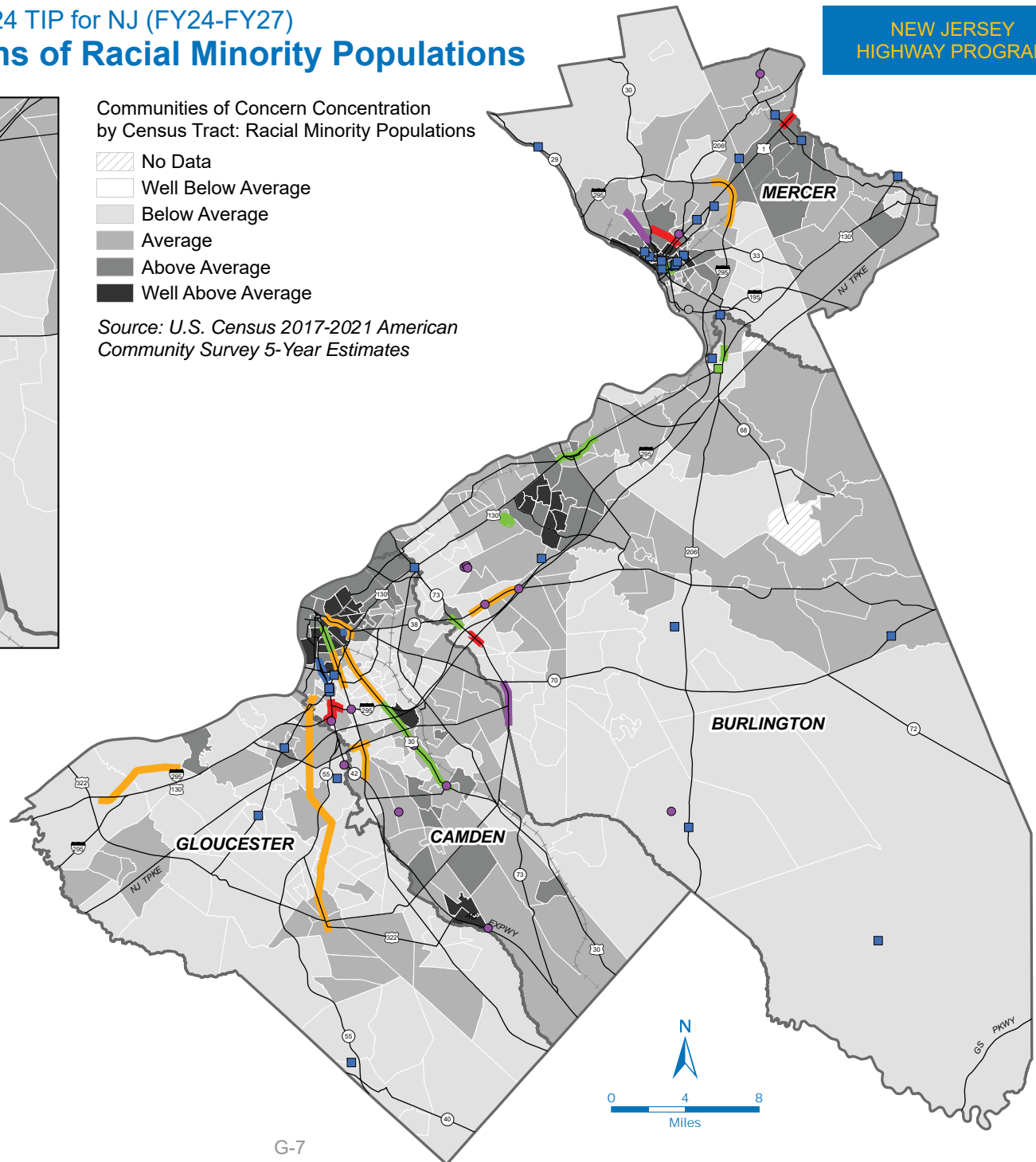


Figure G-5

Equity Analysis: Concentrations of Racial Minority Populations

NEW JERSEY REGIONAL
PUBLIC TRANSIT
PROGRAM



Communities of Concern Concentration
by Census Tract: Racial Minority Populations

- No Data
- Well Below Average
- Below Average
- Average
- Above Average
- Well Above Average

Source: U.S. Census 2017-2021 American
Community Survey 5-Year Estimates

DRAFT DVRPC FY2024 TIP for NJ (FY24-27)*

■ / — Transit Project

* Not all TIP projects can be mapped ("Unmappable")
due to the scale and nature of the improvement.

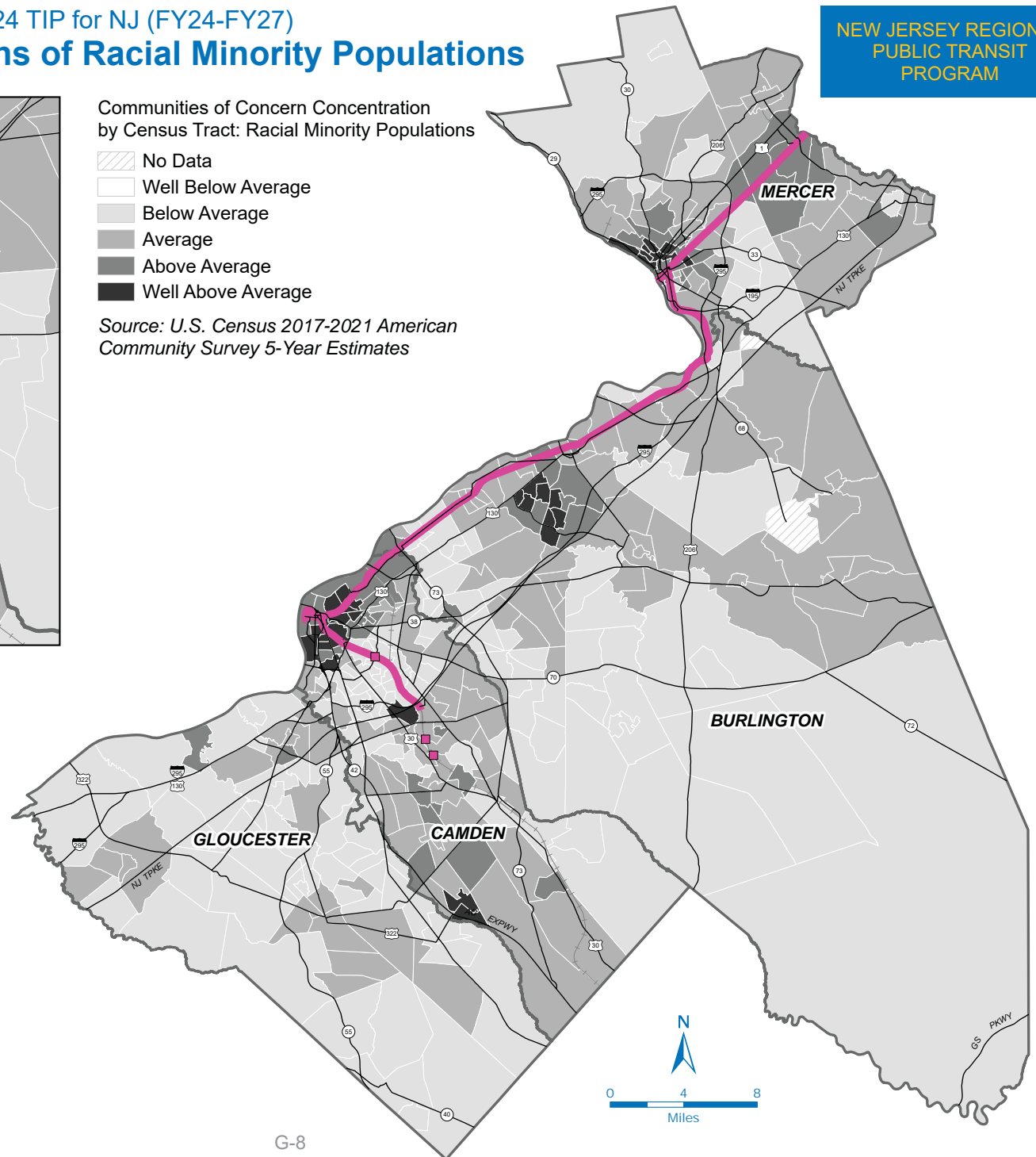
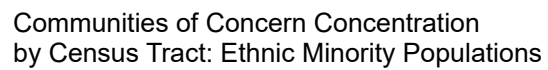


Figure G-6



☐ Well Below Average

Below Average

■ Average

■ Above Average

Well Above Average

Source: U.S. Census 2017-2021 American Community Survey 5-Year Estimates



Figure G-7

Equity Analysis: Concentrations of Ethnic Minority Populations

NEW JERSEY
HIGHWAY PROGRAM



Communities of Concern Concentration
by Census Tract: Ethnic Minority Populations

- No Data
- Well Below Average
- Below Average
- Average
- Above Average
- Well Above Average

Source: U.S. Census 2017-2021 American
Community Survey 5-Year Estimates

DRAFT DVRPC FY2024 TIP for NJ (FY24-27)*

- Intersection/Interchange Improvement
- Bicycle/Pedestrian Improvement
- Bridge Repair/Replacement
- Roadway New Capacity
- Roadway Rehabilitation
- Streetscape
- Other

* Not all TIP projects can be mapped ("Unmappable")
due to the scale and nature of the improvement.

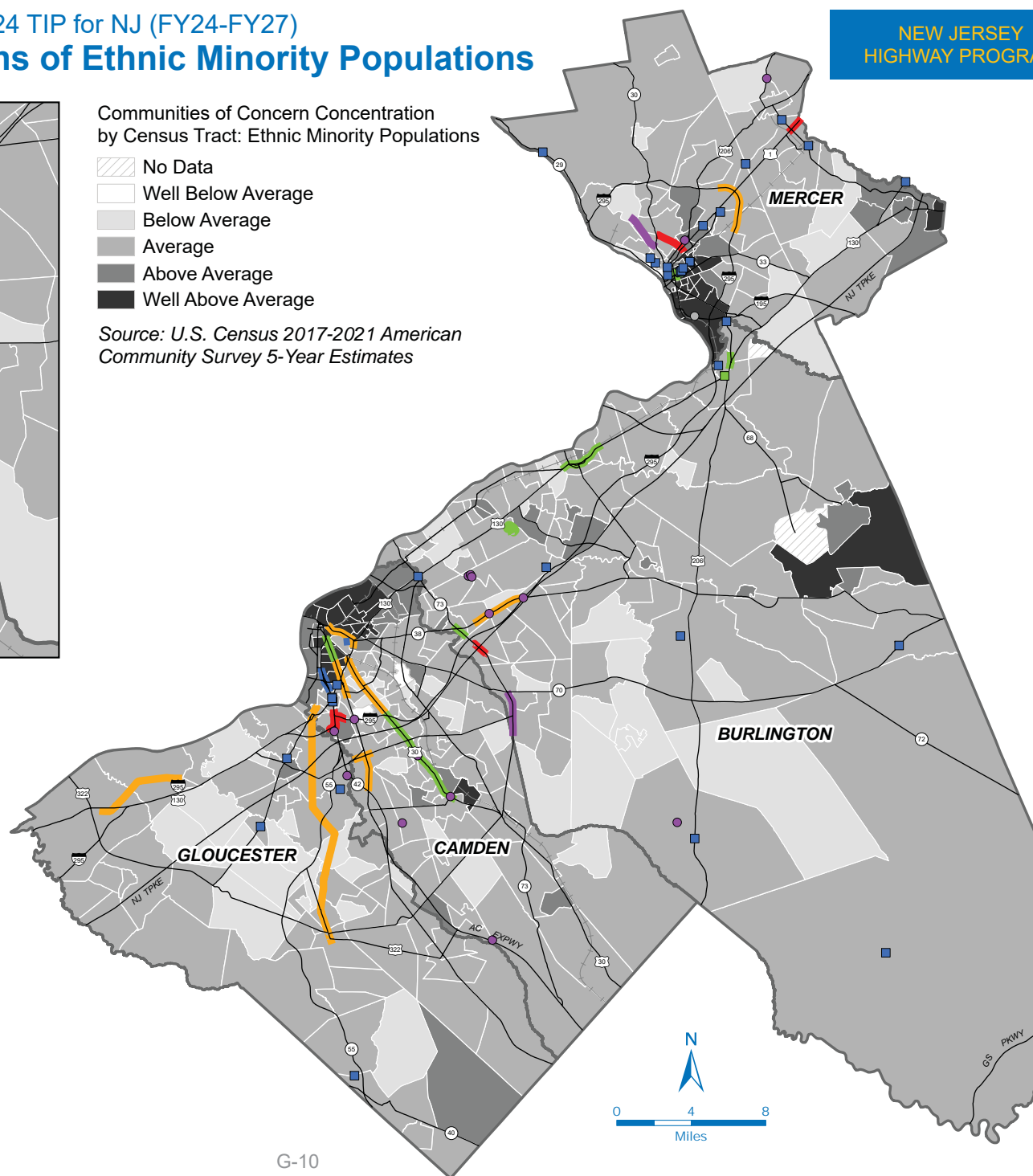


Figure G-8

Equity Analysis: Concentrations of Ethnic Minority Populations

NEW JERSEY REGIONAL
PUBLIC TRANSIT
PROGRAM



Communities of Concern Concentration
by Census Tract: Ethnic Minority Populations

- No Data
- Well Below Average
- Below Average
- Average
- Above Average
- Well Above Average

Source: U.S. Census 2017-2021 American
Community Survey 5-Year Estimates

DRAFT DVRPC FY2024 TIP for NJ (FY24-27)*

■ / — Transit Project

* Not all TIP projects can be mapped ("Unmappable")
due to the scale and nature of the improvement.

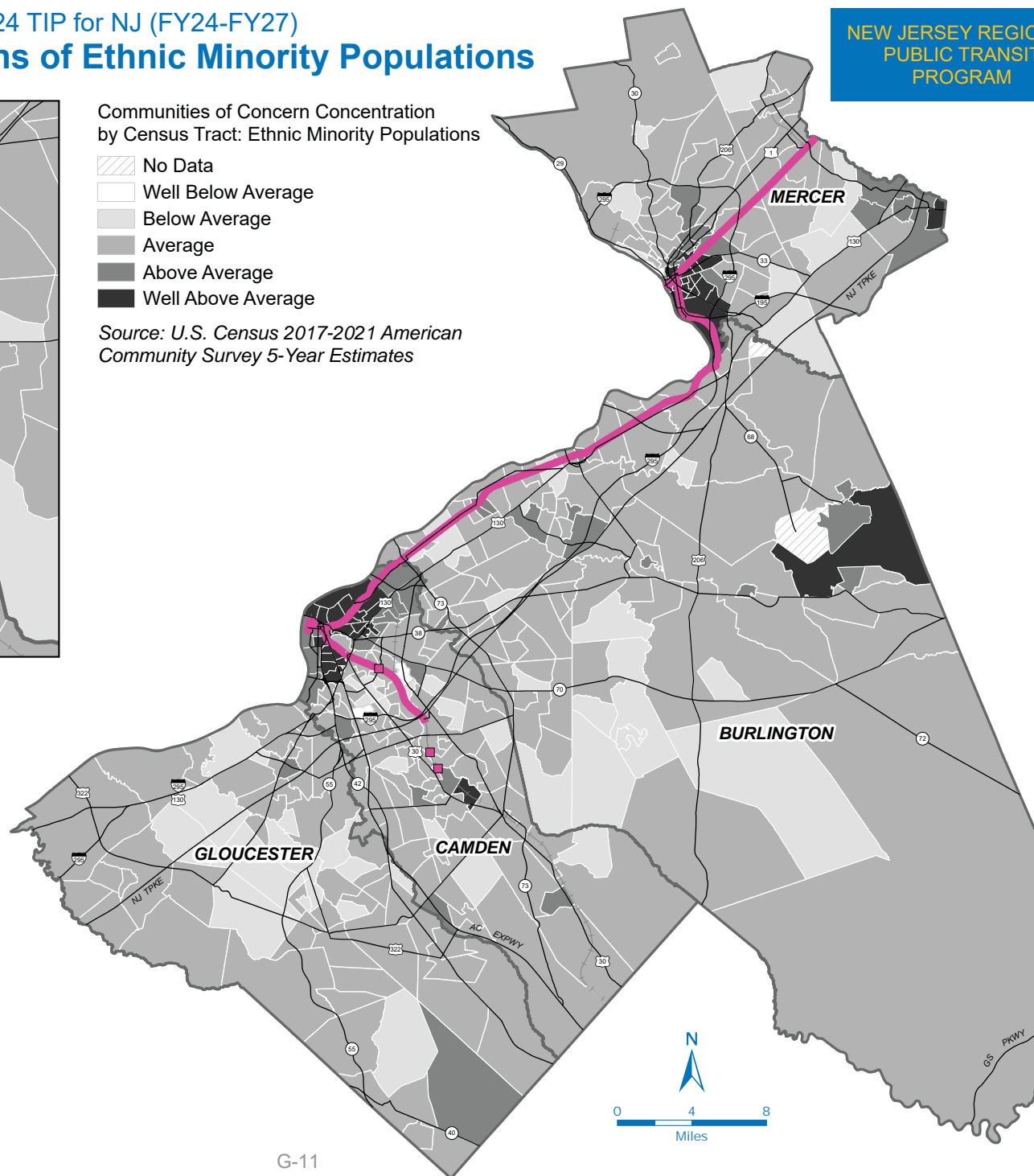
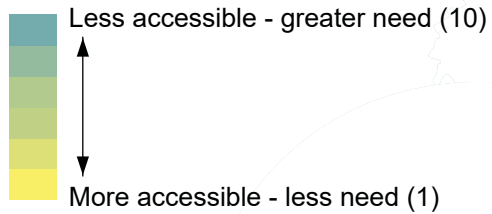
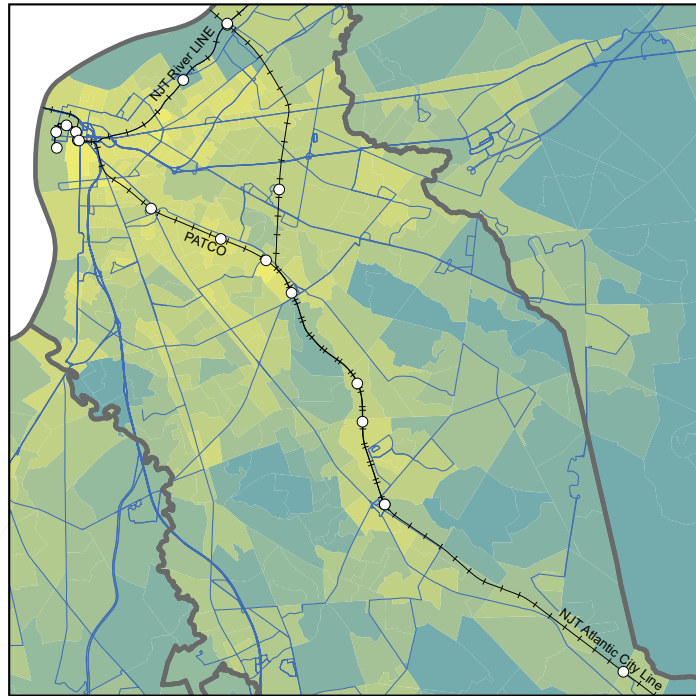


Figure G-9

Transit Accessibility in the DVRPC New Jersey Region



Source: DVRPC's Equity Through Access Map Toolkit, 2017 - www.dvrpc.org/ETA
Accessibility data was derived from DVRPC's transit journey time skim matrix at the TAZ-level and assigned to its related block group.

- NJ Transit Bus Route
- +○+ Passenger Rail Line/Station

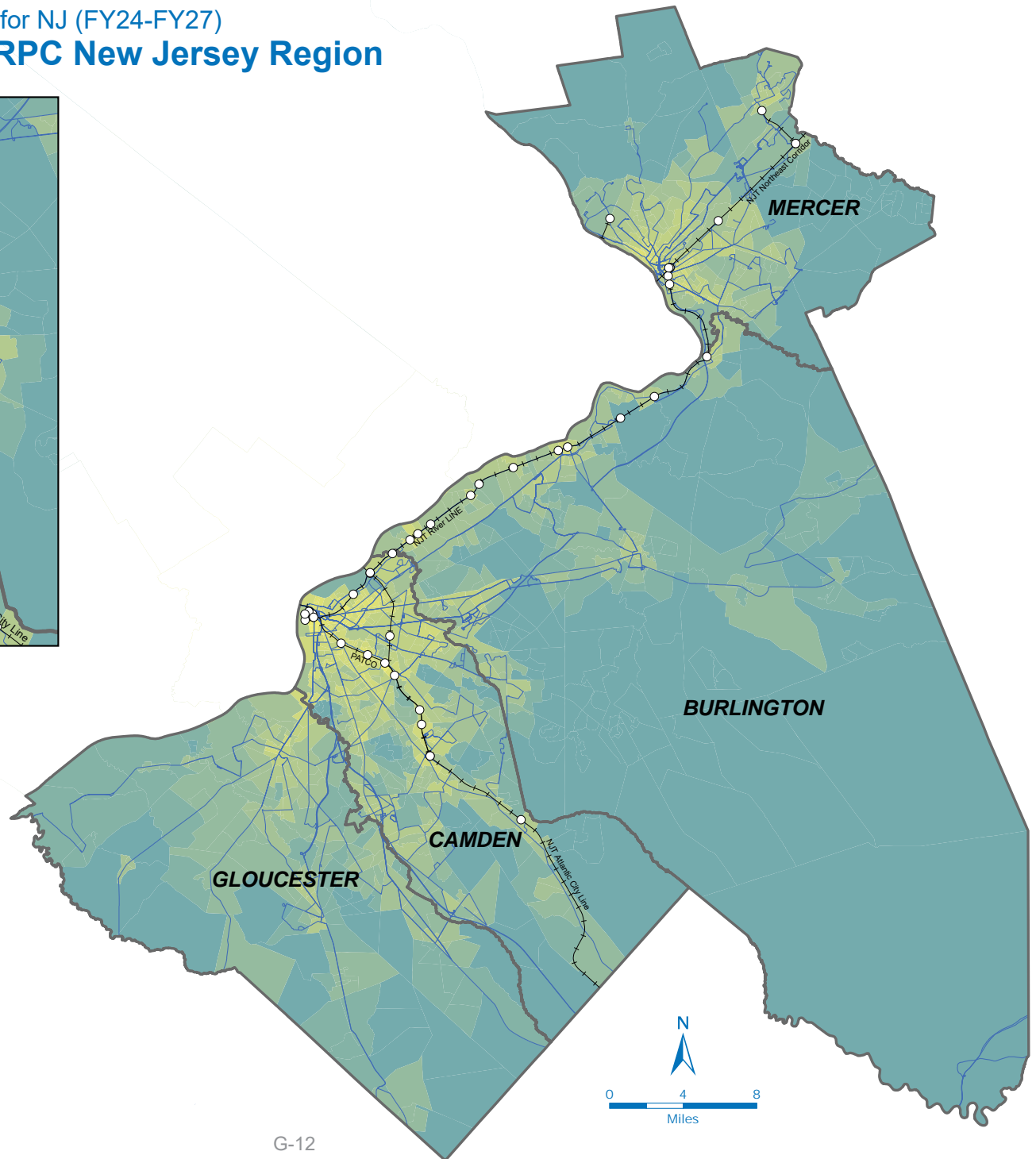


Figure G-10

Appendix G: List of Unmappable Projects

DB #	Project Title
D2020	New or Upgraded Traffic Signal Systems at Intersections, Phase 1
D9807	Gloucester County Bus Purchase
00377	Ferry Program
01300	Transportation Systems Management and Operations (TSMO)
01309	Maritime Transportation System
01316	Transit Village Program
01335	Betterments, Dams
02379	Congestion Relief, Intelligent Transportation System Improvements (Smart Move Program)
03304	Bridge Deck/Superstructure Replacement Program
03309	Environmental Project Support
04324	Electrical Load Center Replacement, Statewide
05304	Construction Program IT System (TRNS.PORT)
05340	Right of Way Full-Service Consultant Term Agreements
05342	Design, Geotechnical Engineering Tasks
06326	Local Concept Development Support
06402	Safe Streets to Transit Program
07332	Minority and Women Workforce Training Set Aside
08381	Bridge Replacement, Future Projects
08387	Local Bridges, Future Needs
08415	Airport Improvement Program
09316	Culvert Replacement Program
09388	Highway Safety Improvement Program Planning
10344	Project Development: Concept Development and Preliminary Engineering
10347	Local Aid Consultant Services
11344	ADA Curb Ramp Implementation
11383	Transportation Management Associations
13304	Intelligent Transportation System Resource Center
13305	Job Order Contracting Infrastructure Repairs, Statewide
13306	Mobility and Systems Engineering Program
13307	Salt Storage Facilities - Statewide
13308	Statewide Traffic Operations and Support Program
13323	Bridge Preventive Maintenance
14300	Title VI and Nondiscrimination Supporting Activities
14404	Bridge Maintenance and Repair, Movable Bridges
15343	Intelligent Traffic Signal Systems
17341	Bridge Inspection Program, Minor Bridges
17353	Storm Water Asset Management
17357	Bridge Maintenance Fender Replacement
17358	Bridge Maintenance Scour Countermeasures
17360	Emergency Management and Transportation Security Support
17390	Local Freight Impact Fund
19315	Aeronautics and UAS Program
19332	Vegetation Safety Management Program
19370	Safety Programs
19600	Smart and Connect Corridors Program
22319	Sign Structure Replacement Contract 2021-2

Appendix G: List of Unmappable Projects (Continued)

DB #	Project Title
22320	Systemic Backplate Pilot Program South
22350	Electric Vehicle Infrastructure Program
22352	Carbon Reduction Program
22353	Protect
22355	CMAQ Initiatives, Statewide
23313	Specified Safety Program
23314	ITS Safety Program
23315	Tunnel Inspection, NTIS
97008	High-Mast Light Poles
98315	Bridge Emergency Repair
98316	Bridge Scour Countermeasures
99358	Safe Routes to School Program
99372	Orphan Bridge Reconstruction
99409	Recreational Trails Program
99327A	Resurfacing, Federal
D0204	Transportation and Community Development Initiative (TCDI) DVRPC
D026	DVRPC, Future Projects
D0302	Burlington County Roadway Safety Improvements
D0401	Gloucester County Roadway Safety Improvements
D0407	Ozone Action Program in New Jersey
D0410	Camden County Roadway Safety Improvements
D0412	Mercer County Roadway Safety Improvements
D0601	Camden County Bus Purchase
D1011	Mercer County Bus Purchase
D1305	Pedestrian Bridge and Tunnel Rehabilitation
D1510	Burlington County Bus Purchase
D1601	New Jersey Regional Signal Retiming Initiative
D1911	PATCO Track Resurfacing & Rail Profile Grinding
D1912	Rehabilitation of PATCO Bridges
D2004	Transportation Operations
D2005	Regional Transportation Demand Management (TDM) Program
D2021	New or Upgraded Traffic Signal Systems at Intersections, Phase 2
D2022	New or Upgraded Traffic Signal Systems at Intersections, Phase 3
D2215	Gateway to Downtown Collingswood Borough (TOP)
D2305	DVRPC Carbon Reduction Program
DR008	Electrical Cable Replacement
DR019	Smoke and Fire Control
DR034	Preventive Maintenance
DR036	Transit Enhancements
DR1501	PATCO Interlocking & Track Rehabilitation
DR1802	Subway Structures Renovation
DR1803	PATCO Station Platform Rehabilitation
DR2006	PATCO Stations Modernizations
DR2203	PATCO Fare Collection Equipment Upgrades
DR2301	Replacement of Track Ties
DR2302	Embankment Restoration, Drainage Improvements & Retaining Walls Rehabilitation

Appendix G: List of Unmappable Projects (Continued)

DB #	Project Title
DR2304	PATCO Substation Improvements
DR2305	PATCO Traction Power
DR2306	PATCO Signal System
DR2308	PATCO Retaining Wall & Embankment Restoration
N063	NJTPA, Future Projects
S044	SJTPO, Future Projects
T05	Bridge and Tunnel Rehabilitation
T06	Bus Passenger Facilities/Park and Ride
T08	Bus Support Facilities and Equipment
T09	Bus Vehicle and Facility Maintenance/Capital Maintenance
T106	Private Carrier Equipment Program
T111	Bus Acquisition Program
T112	Rail Rolling Stock Procurement
T120	Small/Special Services Program
T121	Physical Plant
T122	Miscellaneous
T13	Claims support
T135	Preventive Maintenance-Bus
T143	ADA--Platforms/Stations
T150	Section 5310 Program
T151	Section 5311 Program
T16	Environmental Compliance
T20	Immediate Action Program
T210	Transit Enhancements/Transp Altern Prog (TAP)/Altern Transit Improv (ATI)
T300	Transit Rail Initiatives
T34	Rail Capital Maintenance
T37	Rail Support Facilities and Equipment
T39	Preventive Maintenance-Rail
T42	Track Program
T43	High Speed Track Program
T50	Signals and Communications/Electric Traction Systems
T500	Technology Improvements
T508	Security Improvements
T509	Safety Improvement Program
T515	Casino Revenue Fund
T53E	Locomotive Overhaul
T55	Other Rail Station/Terminal Improvements
T68	Capital Program Implementation
T700	Ferry Program
T88	Study and Development
T951	All Stations Accessibility Program (ASAP)
X03A	Restriping Program & Line Reflectivity Management System
X03E	Resurfacing Program
X065	Local CMAQ Initiatives
X07A	Bridge Inspection
X07F	Bridge and Structure Inspection, Miscellaneous

Appendix G: List of Unmappable Projects (Continued)

DB #	Project Title
X106	Design, Emerging Projects
X107	Transportation Alternatives Program
X11	Unanticipated Design, Right of Way and Construction Expenses, State
X12	Acquisition of Right of Way
X126	Transportation Research Technology
X137	Legal Costs for Right of Way Condemnation
X140	Planning and Research, State
X142	DBE Supportive Services Program
X144	Regional Action Program
X15	Equipment (Vehicles, Construction, Safety)
X150	State Police Enforcement and Safety Services
X151	Interstate Service Facilities
X152	Rockfall Mitigation
X154	Drainage Rehabilitation and Maintenance, State
X154D	Drainage Rehabilitation & Improvements
X15A	Equipment, Snow and Ice Removal
X160	Solid and Hazardous Waste Cleanup, Reduction and Disposal
X180	Construction Inspection
X182	Utility Reconnaissance and Relocation
X185	Bicycle & Pedestrian Facilities/Accommodations
X186	Local Aid, Infrastructure Fund
X186B	Local Aid, State Transportation Infrastructure Bank
X197	Disadvantaged Business Enterprise
X199	Youth Employment and TRAC Programs
X200C	New Jersey Scenic Byways Program
X201	Guiderail Upgrade
X233	Motor Vehicle Crash Record Processing
X239	Sign Structure Inspection Program
X239A	Sign Structure Rehabilitation/Replacement Program
X241	Electrical Facilities
X244	Training and Employee Development
X28B	Park and Ride/Transportation Demand Management Program
X29	Physical Plant
X30	Planning and Research, Federal-Aid
X30A	Metropolitan Planning
X34	New Jersey Rail Freight Assistance Program
X35A	Rail-Highway Grade Crossing Program, State
X35A1	Rail-Highway Grade Crossing Program, Federal
X39	Signs Program, Statewide
X41C1	Local County Aid, DVRPC
X47	Traffic Signal Replacement
X51	Pavement Preservation
X66	Traffic Monitoring Systems
X70	Bridge Management System
X72B	Betterments, Roadway Preservation
X72C	Betterments, Safety

Appendix G: List of Unmappable Projects (Continued)

DB #	Project Title
X75	Environmental Investigations
X98C1	Local Municipal Aid, DVRPC

This page is intentionally left blank.