

## Fostering a Regional Approach to Housing Affordability

Creating communities that are livable, healthy, and walkable requires expanding the region's housing supply and ensuring that the existing stock of lower cost housing is protected and available.

DVRPC created this set of county housing data profiles as part of its ongoing efforts to share data and resources that can help local governments understand the housing affordability challenges they are facing. By analyzing data at the regional level, local governments can better understand their own communities.

Pages two and three of the profile present data from the U.S. Census Bureau that compares Burlington County to the larger Greater Philadelphia region across four themes: People, Homes, Housing Supply and Production, and Affordability.

Pages four and five present analysis from DVRPC's [Housing Submarkets](#) tool focused on Burlington County. This analysis divided each census tract in the region into one of eight distinct submarkets based on a variety of housing stock and market characteristics. Key takeaways from this combined analysis are collected to the right.

Together, the county and regional housing indicators presented here provide important context for municipalities that are evaluating local housing priorities and policies.

## For More Information

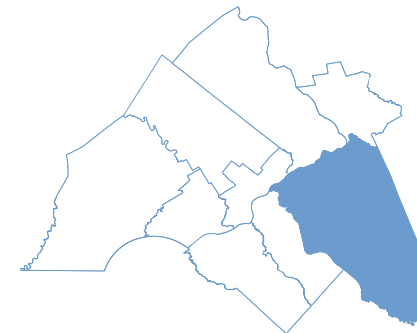
Local governments can play a key role in addressing housing affordability challenges because they establish the rules that determine where, what types, and how much housing can be built in a given community. To learn more about planning tools and resources available to your community or to discuss the housing conditions in your community, please reach out to DVRPC by contacting [asvekla@dvrpc.org](mailto:asvekla@dvrpc.org).

To learn more about DVRPC's housing related research, please visit: [www.dvrpc.org/housing](http://www.dvrpc.org/housing).

DVRPC's full *Housing Submarkets* analysis can be found at [www.dvrpc.org/housing/submarkets](http://www.dvrpc.org/housing/submarkets).

## Burlington County Takeaways

- In 2022, the typical household in Greater Philadelphia would have had to pay approximately 3.8 times their annual income to purchase the median home in Burlington County.
- Households needed to earn approximately \$60,000 to affordably rent the median cost rental home in Burlington County in 2022.
- In 2022, 48.1 percent of renters in Burlington County were cost-burdened, slightly less than the regional threshold of 49 percent.
- The rental vacancy rate in Burlington County (4.4 percent) was lower than the regional rate of 4.8 percent in 2022. Vacancy rates between 5 and 10 percent generally indicate a balanced market.
- Burlington County's housing stock is relatively new compared to the region. Roughly 10 percent of the county's homes were built prior to 1940 while 44 percent were built after 1980.
- The vast majority (73%) of Burlington County is classified by DVRPC as Housing Submarket 2: low-density suburban and exurban neighborhoods with few renters and moderately higher housing prices and incomes.



# Burlington County, NJ: Key Housing Numbers

## People

	Burlington County	Region
Population (2022)	466,103	5,876,299
Population Change (2012–2022)	3.3%	3.6%
Population 65 and Older (2022)	18.4%	17.3%
Households (2022)	176,334	2,300,107
Households Change (2012–2022)	7.0%	11.6%
Single Person Households (2022)	26.9%	29.8%
Median Household Income (2022)	\$100,478	\$87,067
Median Income Change (2012–2022)	34.5%	41.2%
Population by Race (2017-2021)		
White alone	69.3%	63.6%
Black	16.8%	20.4%
Asian alone	5.3%	6.7%
Other race	2.6%	4.3%
Two or more races	5.8%	4.8%
Poverty Rate (2022)	6.6%	11.6%

## Homes

	Burlington County	Region
Housing Units (2022)	186,200	2,476,225
Housing Unit Change (2012–2022)	5.3%	3.6%
Single-Family Home <sup>1</sup> (2022)	79.1%	72.1%
Owner-Occupied (2022)	76.6%	66.2%
Units by Structure Type (2022)		
Detached Single-Family	65.0%	42.2%
Attached SF/Duplex	15.7%	34.6%
3 or 4 Units	3.3%	4.4%
5 to 9 Units	3.9%	3.5%
10 to 19 Units	5.2%	3.7%
20 or More Units	5.6%	10.7%
Year Structure Built (2022)		
Before 1940	10.1%	22.4%
1940 to 1959	15.0%	22.0%
1960 to 1979	30.7%	23.5%
1980 to 1999	27.2%	17.6%
2000 or later	16.9%	14.4%

## Housing Supply & Production

	Burlington County	Region
Building Permits Approved (2022)	1,998	14,968
Average Annual Building Permits (2010–2022)	1,259	12,932
Share of Housing Units Approved by Type (2010–2022)		
Single-Family	50.6%	44.1%
Small Multifamily (2 to 4 units)	2.0%	7.1%
Large Multifamily (5+ units)	47.3%	48.8%
Rental Vacancy Rate (2022)	3.4%	4.8%

### Data Sources and Notes

All data presented here was obtained from the U.S. Census Bureau, American Community Survey (ACS) 1- and 5-Year Estimates for the year(s) listed.

<sup>1</sup> Includes single-family attached and detached units

<sup>2</sup> The ratio of home value to income is a measure of how affordable housing is. A lower ratio indicates that housing is more affordable, while a higher ratio means that a larger portion of income is needed to cover costs. Home value-to-income ratios between 2.5 and 3.5 are generally considered healthy.

<sup>3</sup> This figure was calculated using a 30 year fixed mortgage at the 52-week average rate as of June 13, 2024, with a 10% down payment. This figure assumes an affordable mortgage payment is equal to or less than 30% of gross salary. This calculation is based solely on principal and interest payments and does not include taxes and insurance.

<sup>4</sup> Households spending more than 30 percent of their income on housing are considered “cost-burdened” and may have trouble making other payments and building wealth.

## Affordability

	Burlington County	Region
Median Home Value (2022)	\$329,300	\$327,070
Median Home Value Change (2012–2022)	38.0%	41.5%
County Median Home Value/ Regional Median Household Income <sup>2</sup> (2022)	3.8	3.8
Household Income Needed to Afford Median Value Home <sup>3</sup> (2022)	\$79,032	\$78,480
Cost-Burdened Owner Households <sup>4</sup> (2022)	24.0%	23.6%
Median Gross Rent (2022)	\$1,478	\$1,401
Median Gross Rent Change (2012–2022)	29.4%	38.0%
Household Income Needed to Afford Median Apartment (2022)	\$59,120	\$56,040
Cost-Burdened Renter Households <sup>4</sup> (2022)	48.1%	49.0%

# Housing Submarkets

DVRPC's Submarket Analysis used 14 housing related indicators to present the region as a complex mosaic of 8 submarkets, each exhibiting its own economic and housing stock characteristics. This analysis helps to illustrate that the factors influencing the cost and supply of housing do not neatly align with municipal or county boundaries.

For more information on DVRPC's methodology, data inputs, and data sources, please visit the project's [Github page](#).

## Submarket 6

Denser urban and town center neighborhoods with the oldest, lowest cost housing and highest rate of vacancy

## Submarket 7

Moderately-priced urban and suburban neighborhoods with higher shares of apartments and renters

## Submarket 5

Mix of older and newer suburban neighborhoods with the highest incomes, home prices, and rents

## Submarket 4

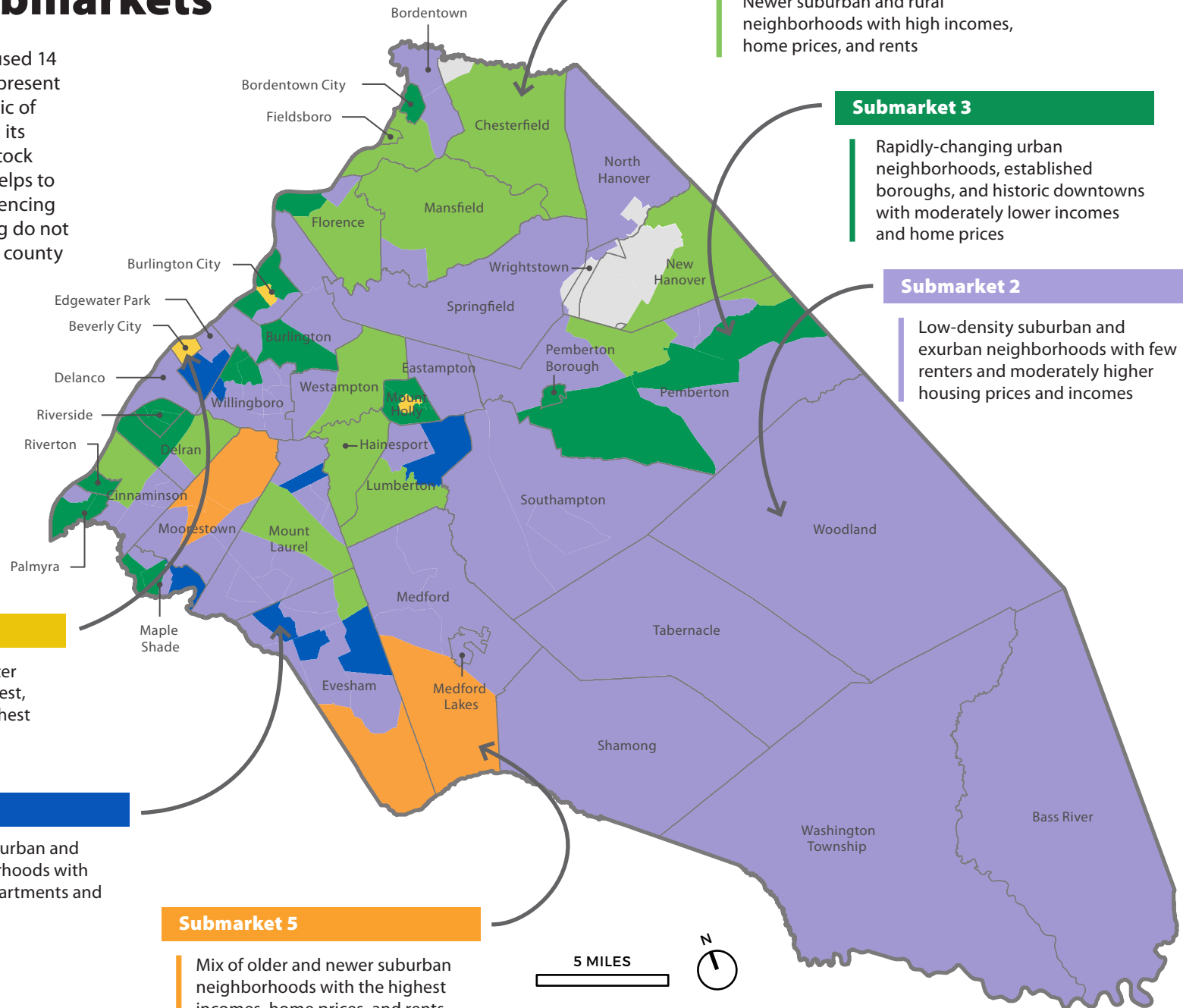
Newer suburban and rural neighborhoods with high incomes, home prices, and rents

## Submarket 3

Rapidly-changing urban neighborhoods, established boroughs, and historic downtowns with moderately lower incomes and home prices

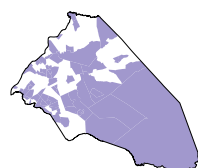
## Submarket 2

Low-density suburban and exurban neighborhoods with few renters and moderately higher housing prices and incomes



Six of the eight regional submarkets can be found in Burlington County. Short text descriptions of these submarkets are included with the map on page 4. The table below compares these submarkets to each other and the larger region across a range of housing-related variables.

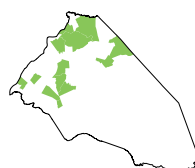
A large majority (approximately 73 percent) of Burlington County is classified as Submarket 2. This submarket is defined by low-density suburban and exurban neighborhoods that primarily consist of owner-occupied single-family homes. Single-family homes in this submarket are moderately more expensive than the regional average, yet home prices in this submarket have increased slightly less than the regional average in recent years.



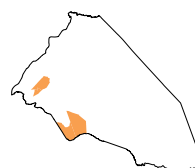
**SUBMARKET 2**



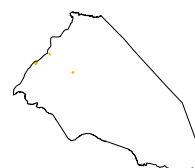
**SUBMARKET 3**



**SUBMARKET 4**



**SUBMARKET 5**



**SUBMARKET 6**



**SUBMARKET 7**

**REGIONAL  
AVERAGE**

	SUBMARKET 2	SUBMARKET 3	SUBMARKET 4	SUBMARKET 5	SUBMARKET 6	SUBMARKET 7	REGIONAL AVERAGE
<b>PERCENT OF LAND AREA*</b>	73%	5%	13%	4%	1%	2%	—
<b>RESIDENTIAL DENSITY<sup>1</sup></b> (Units/Acre)	1.4	4.5	0.5	0.7	13.1	3.5	2.6
<b>SINGLE-FAMILY HOME<sup>1</sup></b>	87.6%	75.9%	94.3%	94.7%	76.1%	43.1%	79.2%
<b>OWNER-OCCUPIED<sup>1</sup></b>	84.3%	65.4%	90.2%	90.9%	46.8%	41.3%	68.9%
<b>MEDIAN HOUSEHOLD INCOME<sup>1</sup></b>	\$97,158	\$65,242	\$122,926	\$161,627	\$34,464	\$65,765	\$79,083
<b>SINGLE-FAMILY HOME SALE PRICE<sup>2</sup></b> (2021)	\$348,250	\$235,000	\$417,783	\$665,000	\$127,700	\$300,000	\$295,500
<b>CHANGE IN SINGLE-FAMILY HOME SALE PRICES<sup>2</sup></b> (2016–2021)	20.7%	35.4%	13.2%	16.1%	27.0%	21.4%	23.1%
<b>MEDIAN MONTHLY RENT<sup>1</sup></b> (2016–2020)	\$1,360	\$1,118	\$1,486	\$1,617	\$943	\$1,324	\$1,203
<b>COST-BURDENED HOUSEHOLDS<sup>1</sup></b>	30.4%	37.2%	27.5%	25.4%	49.3%	39.5%	34.6%

\* Two percent of Burlington County is not covered by any submarket.

<sup>1</sup> American Community Survey (ACS) 5-Year Estimates (2016–2020)

<sup>2</sup> Estimates based on property sales data obtained from the Warren Group