

GREATER PHILADELPHIA

FUTURES GROUP

DIALOGUE. COLLABORATION. KNOWLEDGE-SHARING.



COVID-19 Implications & Forecasting

July 28, 2022, 1:00pm – 3:00pm

Virtual Meeting

Please Register for the Zoom Webinar [HERE](#)

AGENDA

Welcome & Introductions

Panelist Presentations

Hear from four distinguished speakers on implications of COVID-19 more than two years from its outbreak in the U.S., what the future might hold, and how we can prepare for it. Panelists include:

- Dr. Pranay Sinha, Infectious Diseases physician and post-doctoral researcher, BMC
- Mike Berne, Principal, MJB Consulting
- Mike Shields, Research Director, Economy League of Greater Philadelphia
- Stephanie Finch, Lead Freight Planner, Freight and Logistics Advisory Services

Panelist Q&A Discussion

Panelists will field questions from the hosts and audience members, and share their thoughts, predictions, and recommendations for planning for the future.

Updates

Members will be invited to share updates from their organizations, time permitting.

Connecting People, Places & Prosperity in Greater Philadelphia

The Delaware Valley Regional Planning Commission (DVRPC) fully complies with Title VI of the Civil Rights Act of 1964 and related nondiscrimination statutes in all activities. For more information, visit www.dvrpc.org/GetInvolved/TitleVI.

@dvrpc | #DVRPCfutures

Connect with us!



SPEAKER BIOS

PRANAY SINHA, M.D.

Infectious Diseases physician and post-doctoral researcher at Boston Medical College.



Pranay Sinha is an infectious diseases fellow at Boston University School of Medicine, where he helps care for patients with complicated infections and takes part in global health research. He has been involved in TB research since 2014. He has field experience in India and South Africa. Clinically, he works as an Infectious Diseases physician at Boston Medical Center and served as a member of its COVID-19 treatment protocol group at the start of the pandemic in 2020.

Michael J. Berne

Principal, MJB Consulting



Michael J. Berne, is one of North America's leading experts and futurists on urban and Downtown/Main Street districts as well as the retail industry more generally. As the Founder and President of MJB Consulting, Michael has amassed more than twenty years of experience in conducting retail market analyses, devising tenancing strategies and spearheading implementation efforts across the U.S., Canada and the U.K.

MIKE SHIELDS

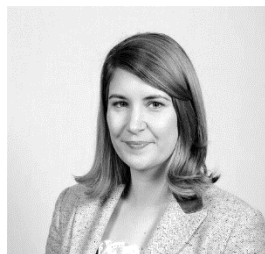
Research Director, Economy League of Greater Philadelphia



Mike is Research Director at the Economy League, specializing in data wrangling and quantitative research methods. He enjoys all things "data" and his research interests include neighborhood change, gentrification, Millennials, urban development, and environmental change. Mike is also completing his doctorate in sociology at Northeastern University.

STEPHANIE FINCH

Lead Freight Planner, WSP



Stephanie is Lead Freight Planner within the Freight and Logistics Advisory Services Program at WSP. Prior to her current role, she served as Program Manager of the Goods Movement Action Program (G-MAP), a regional freight planning partnership between the Port Authority, NJDOT, and NYSDOT. She has worked on a National Cooperative Highway Research Program project on federal policy for automated & connected vehicles, and has executed studies on virtual weigh stations, statewide freight planning, and economic impacts of transportation infrastructure investments at the Connecticut Department of Transportation.