



Overview of the Transportation Improvement Program (TIP)

Water Table Funding Subcommittee Meeting

Jesse Buerk
Manager, Office of Capital Programs
jbuerk@dvrpc.org



What is the TIP?



- TIP = Transportation Improvement Program
- **Financially constrained list of priority federal and state funded capital transportation projects in the DVRPC region**
- Best estimate of project schedules and costs
- Federal Fiscal Year (FY): Oct 1 - Sept 30
- Multi-year program updated every two years

United States Title 23 CFR § 450.326:

TIP required to spend federal \$



- Developing and maintaining the TIP makes the region eligible to receive and spend federal transportation dollars
- Must be consistent with Long-Range Plan, Congestion Management Process, Air Quality regulations
- Must be consistent with federal transportation performance measures & targets
- Not a guarantee of funds or implementation

The TIP is multimodal



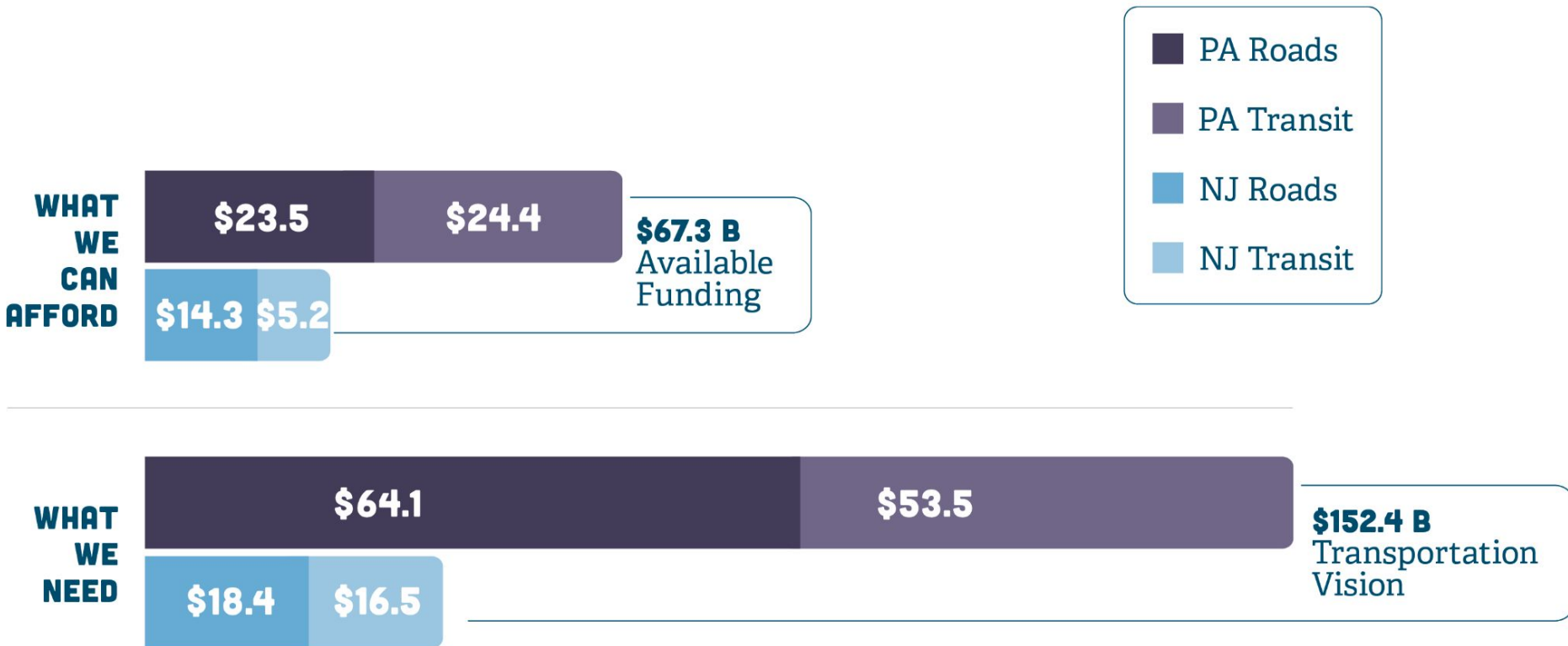
- Bicycle/Pedestrian Improvements
- Streetscape Improvements
- Bridge Repair/Replacement
- Roadway Rehabilitation
- Roadway New Capacity
- Intersection/Interchange Improvements
- Signal/ITS Improvements
- Transit Improvements
- Other

Metropolitan Transportation Planning Process



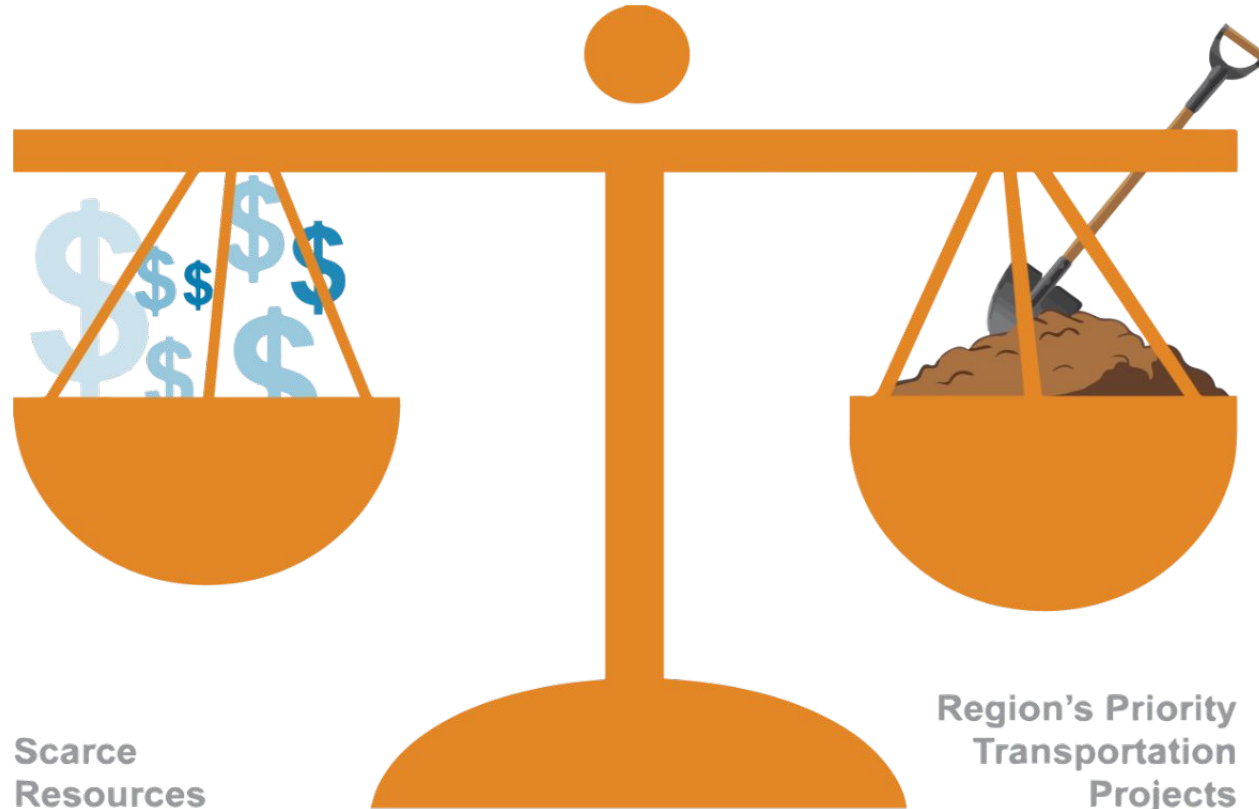


Revenue Forecast vs. Needs Assessment

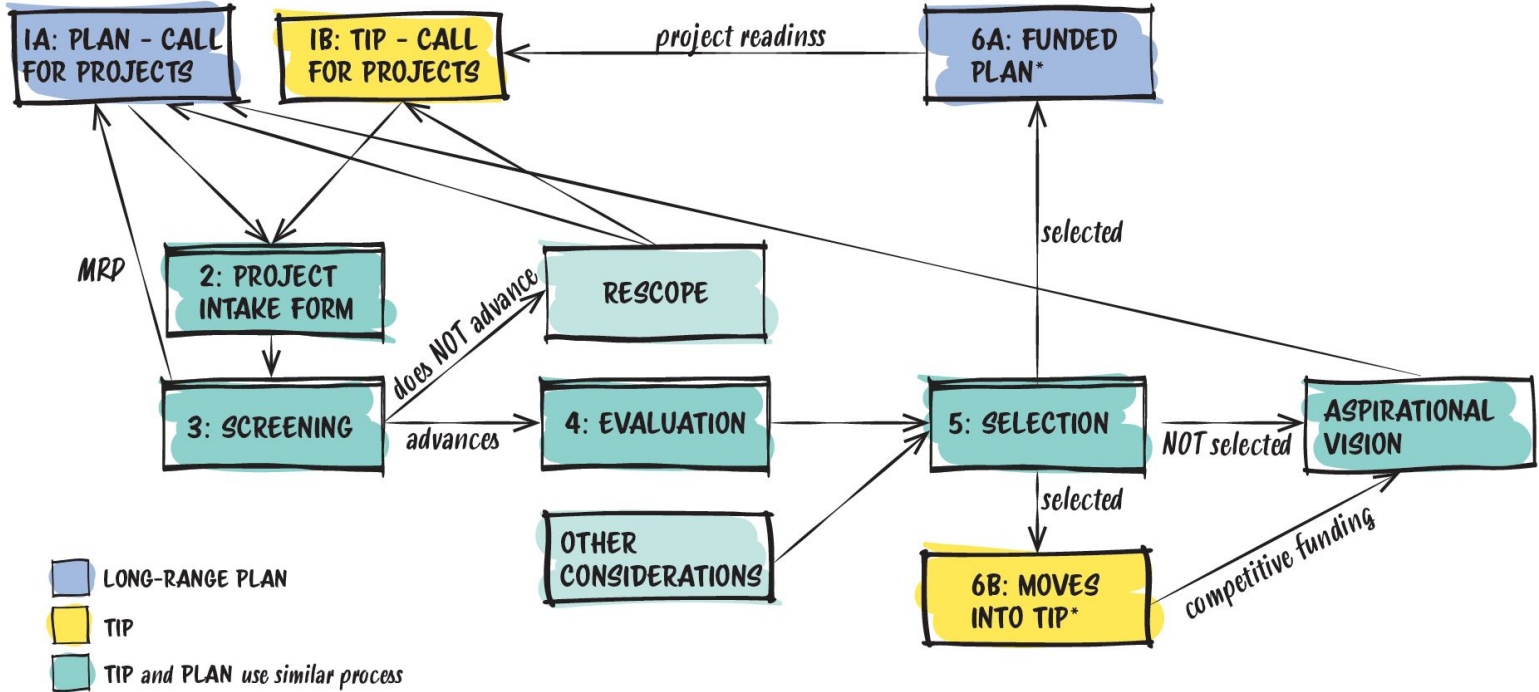


All figures in billions of year-of-expenditure dollars.

Regional Decision Making is Critical



Project Identification, Evaluation, and Selection

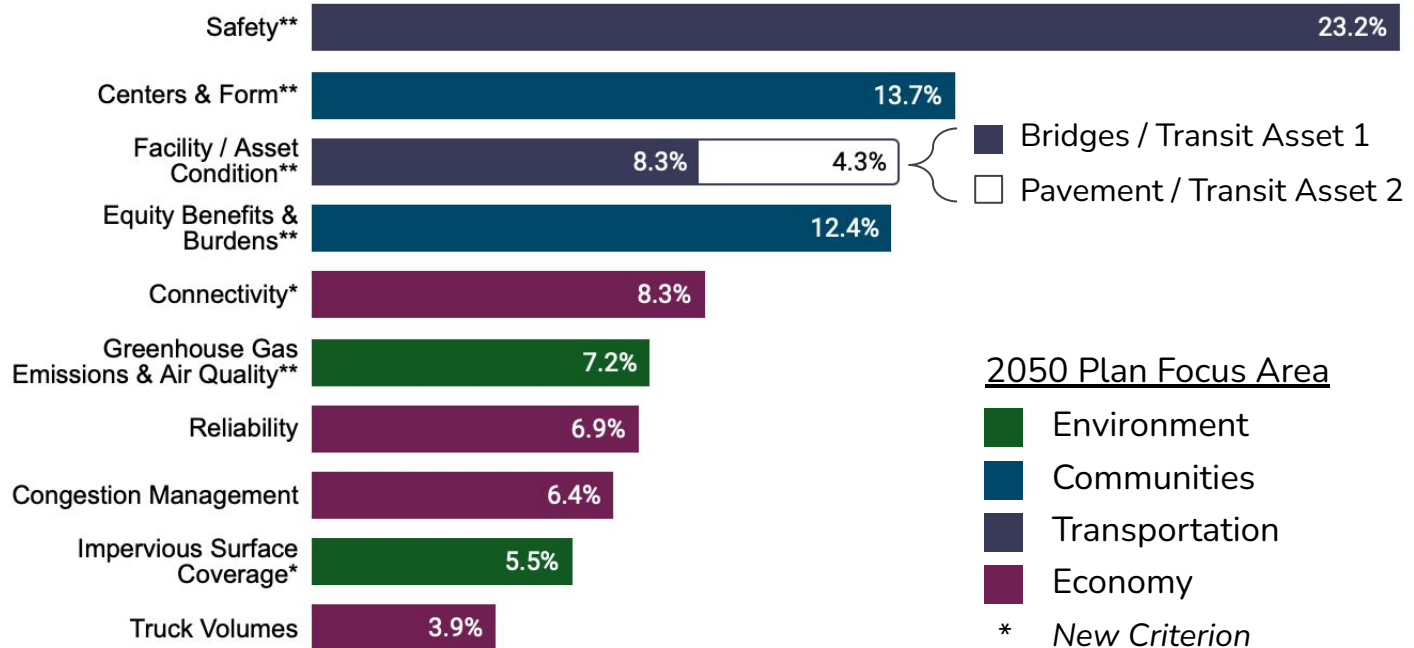


*based on funding availability

Source: DVRPC, 2023



Plan-TIP Project Benefit Evaluation Criteria



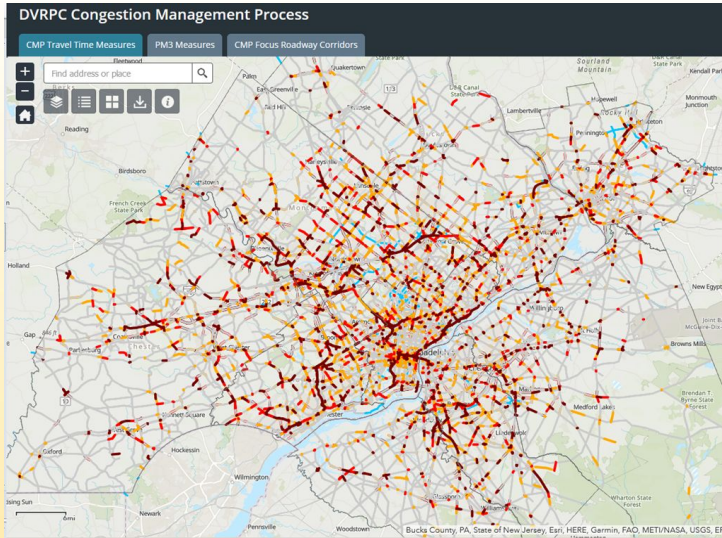
2050 Plan Focus Area

- Environment
- Communities
- Transportation
- Economy

* New Criterion

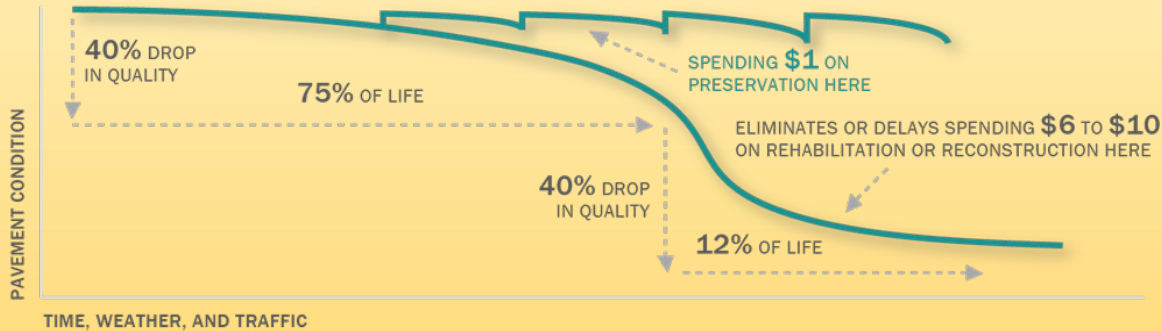
** Major Revisions in Update

Performance-Based Planning and Programming



Federal Performance Measures

- Safety
- Bridge
- Pavement
- Congestion
- Greenhouse Gas (new)



Transportation
Improvement
Program

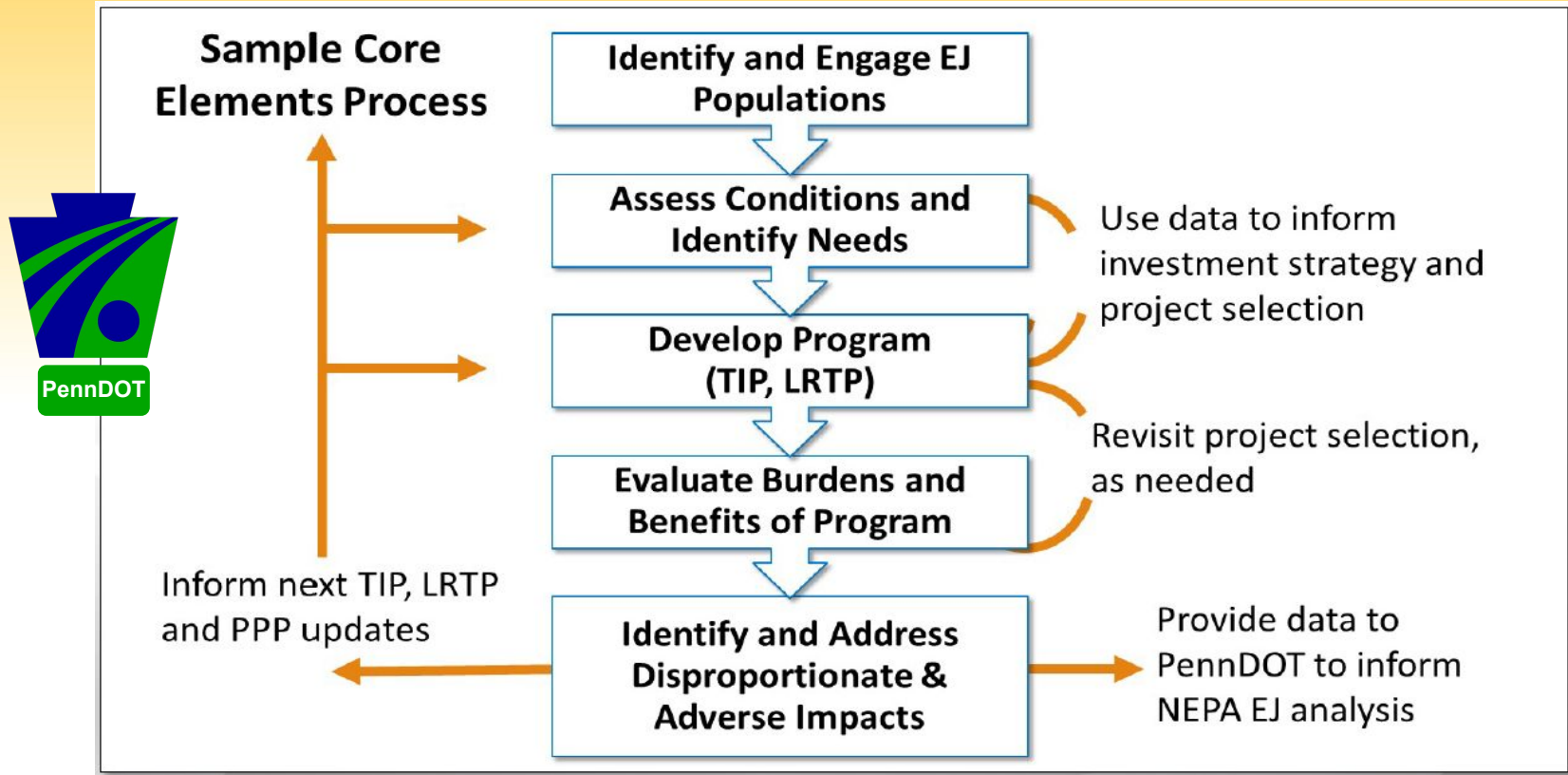
TIP

Other Project Selection Considerations

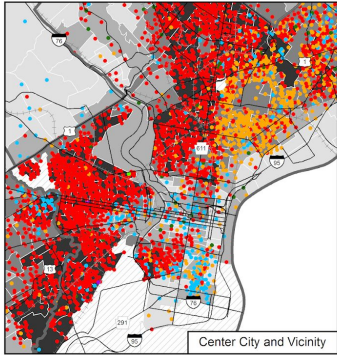
- System- and program-level EJ analyses
- Federal TPM targets
- Performance-based planning and asset management
- Geographic equity
- Regional and local priorities
- Political support
- Funding eligibility
- Project readiness
- Ability to leverage other investments



PennDOT Core Elements - TIP EJ/Equity Evaluation Process



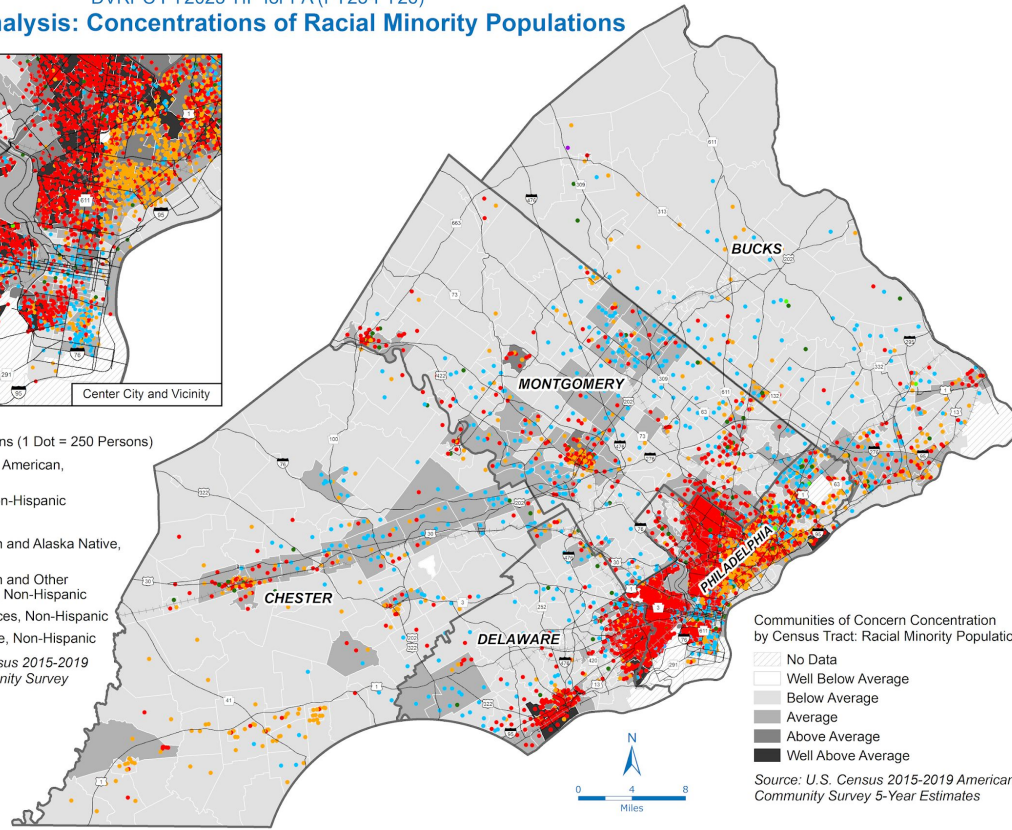
Equity Analysis: Concentrations of Racial Minority Populations



Minority Populations (1 Dot = 250 Persons)

- Black or African American, Non-Hispanic
- Asian alone, Non-Hispanic
- Hispanic
- American Indian and Alaska Native, Non-Hispanic
- Native Hawaiian and Other Pacific Islander, Non-Hispanic
- Two or more races, Non-Hispanic
- Some other race, Non-Hispanic

Source: U.S. Census 2015-2019 American Community Survey 5-Year Estimates



Communities of Concern Concentration by Census Tract: Racial Minority Populations

- No Data
- Well Below Average
- Below Average
- Average
- Above Average
- Well Above Average

Source: U.S. Census 2015-2019 American Community Survey 5-Year Estimates



Identify Populations



Identify and Engage EJ populations

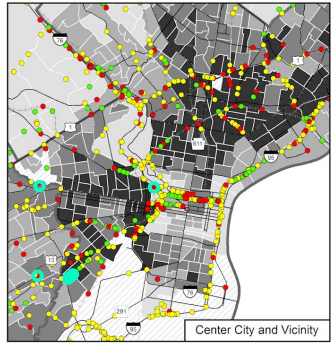
Assess Conditions and Needs

Develop Program

Evaluate Burdens/Benefits

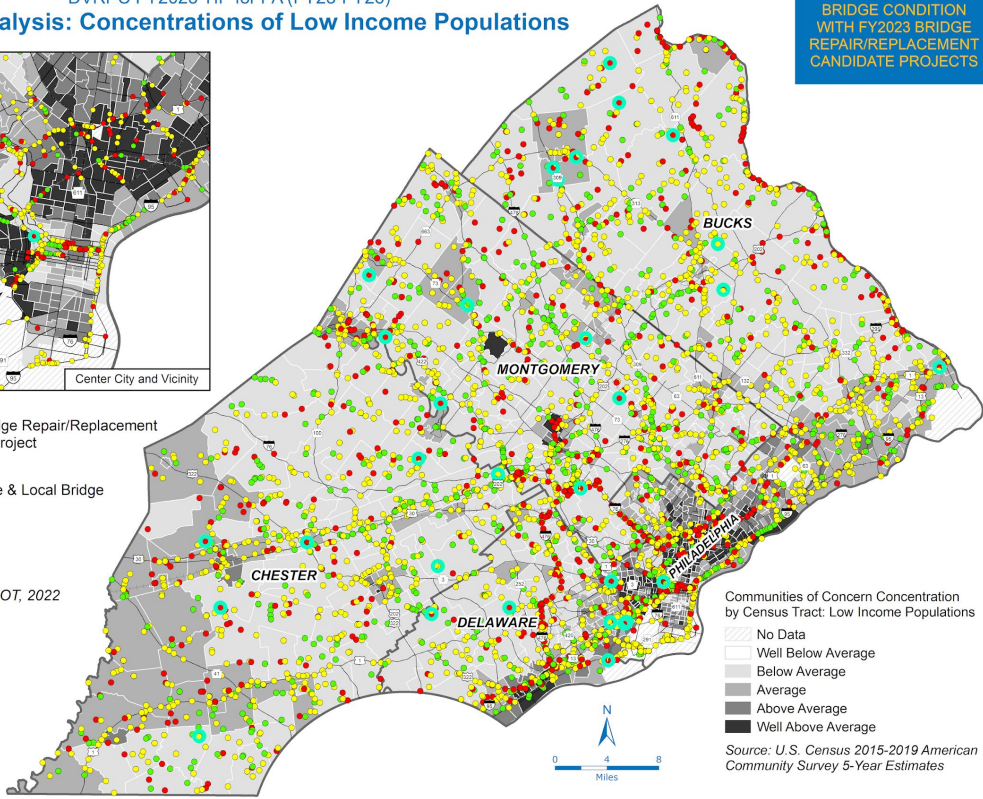
Identify/Address Impacts

Equity Analysis: Concentrations of Low Income Populations



BRIDGE CONDITION WITH FY2023 BRIDGE REPAIR/REPLACEMENT CANDIDATE PROJECTS

- FY2023 Bridge Repair/Replacement Candidate Project
 - PennDOT State & Local Bridge Condition
 - Good
 - Fair
 - Poor
- Source: PennDOT, 2022



Assess Conditions & Needs: Bridges



Identify and Engage EJ populations

Assess Conditions and Needs

Develop Program

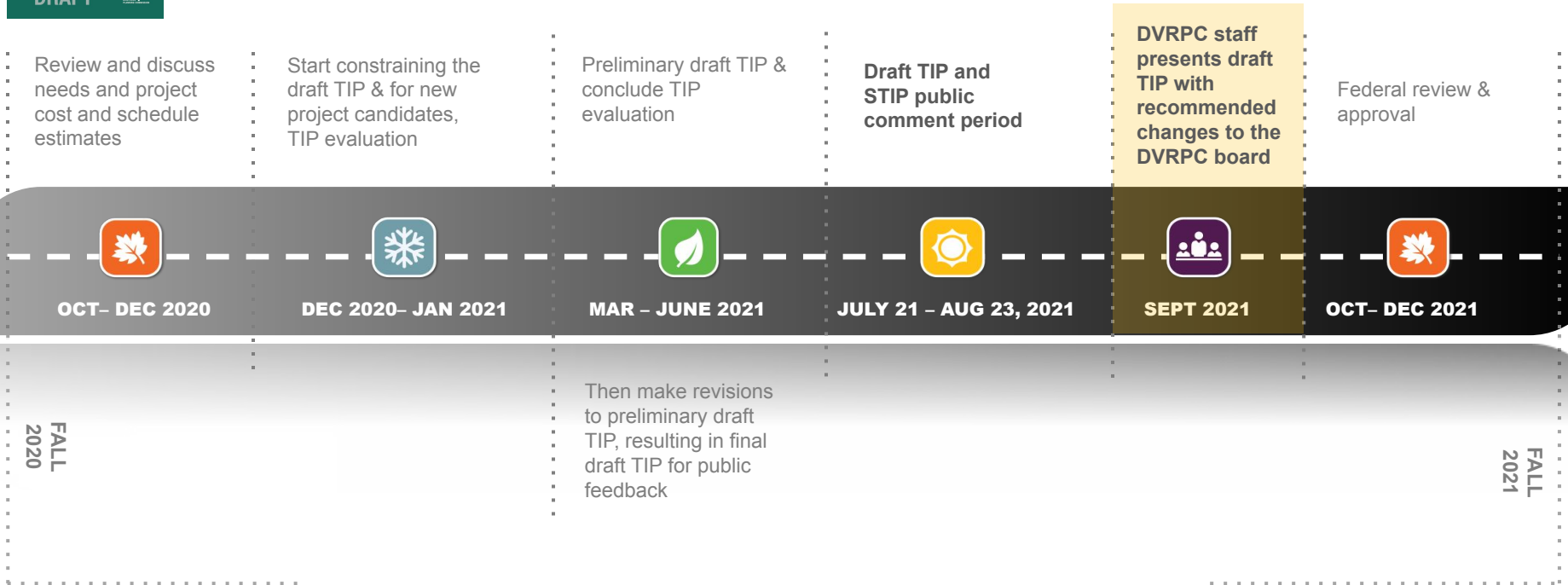
Evaluate Burdens/Benefits

Identify/Address Impacts





FY2022 TIP for New Jersey Development Timeline



Over 10 NJ TIP Subcommittee meetings from
September 2020 - August 2021

Public Comment Period

- 30+ day public comment period held for NJ and PA TIPs
- Virtual and In-Person Public Meeting(s) held
- Comments can be submitted:

Electronically via Public Comment Web Application at www.dvrpc.org/tip/draft

Or by Email at tip@dvrpc.org

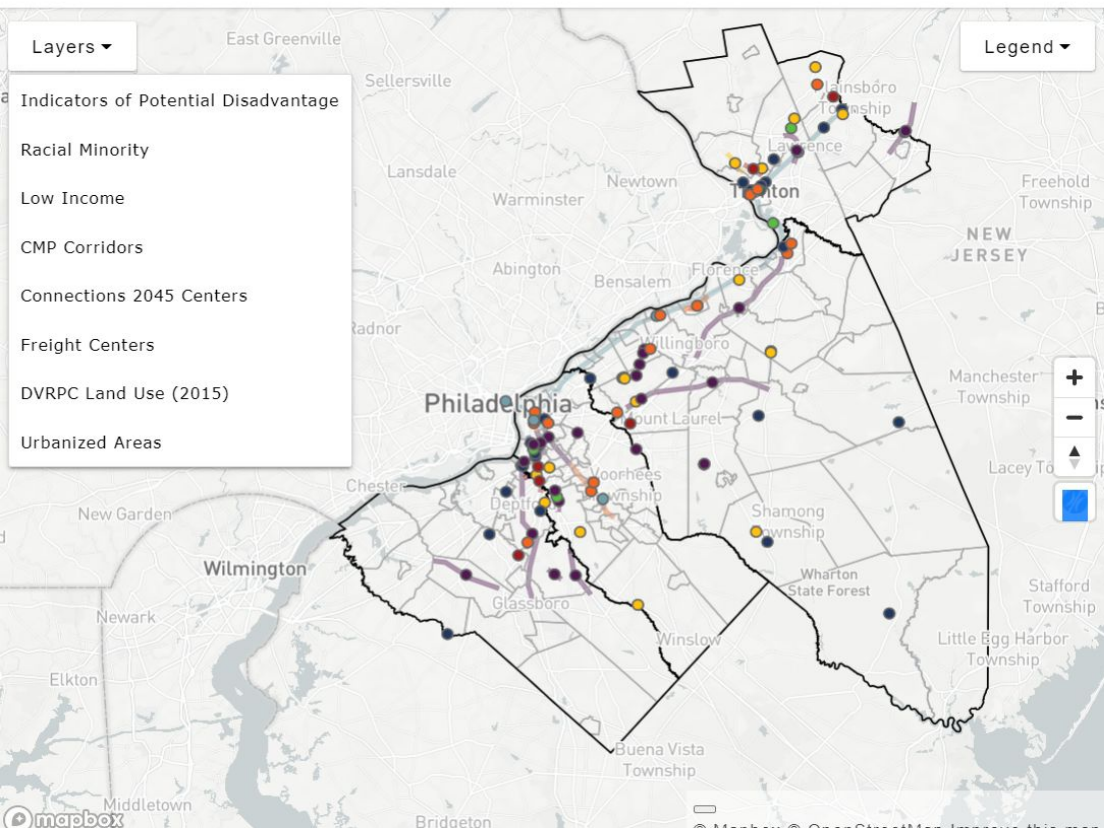
Or by US Mail to DVRPC

Or by Fax to 215-592-9125

Or at a Public Meeting

- Documents available for viewing on website

www.dvrpc.org/tip/draft



All Categories

83 results.

[List](#) / [Tiles](#)

CR 616 (Mill Street) Bridge over South Branch Rancocas Creek
DB #D2202



CR 614 (Tom Brown Road), CR 603 (Riverton Road) and New Albany Road Intersection Improvement - CR 603 (Riverton Road) and New Albany Road
DB #D2201



Route 38, Nixon Drive to Route 295 Bridge
DB #15385



Pavement Preservation - Route 38 from Route 295 to Route 206
DB #X51



Circulation Improvements Around Trenton Transit Center

Relevance for Water Table Funding Subcommittee

- Framework for evaluating, prioritizing, and programming projects
- Funding and eligibility constraints/considerations
- Regional planning process
- Joint Municipal Authority
 - *Title 53, Chapter 56 Municipal Authorities, June 19, 2001, P.L. 287, No. 22*
 - *Can assess fees, incur debt, finance projects*



Questions?



Jesse Buerk
Manager, Office of Capital Programs
jbuerk@dvrpc.org

