



watertable

Phase 2

Funding Subcommittee

September 13, 2023

Agenda

1. Introductions

2. Recap:

- a. Phase II Initiative
- b. Purpose of Funding Subcommittee
- c. Structure and Timeline
- d. Ideas from Meeting #1 of Funding Subcommittee

3. Exercise: Logic Model

4. Next Steps

Recap

1. Water Table Phase II

- a. Subcommittees for Funding (DVRPC), Branding (PDE), Workforce Development (WRA), Climate Change (PWD)

2. Subcommittees' Purpose

- a. Share information
- b. Build relationships
- c. Create a work plan representing interests of all 3 sectors

3. Structure and Timeline

- a. Meet Quarterly
- b. Final work plan due 12/25

Recap - Ideas to Pursue from 7/12/23 Meeting

1. RASCL Program - good model
2. Emerging Contaminants Projects - few in SEPA
3. Investments in Underserved Communities - lots of good research out there
4. Less complex funding structures for GSI - is this possible?
5. CIP for water infrastructure - is regional CIP worthwhile/possible?
6. Empower community driven projects - how to achieve?
7. Share info on funding sources - Apdx B of Accessing Funding Study [23005.pdf \(dvrpc.org\)](#)

Logic Model Exercise

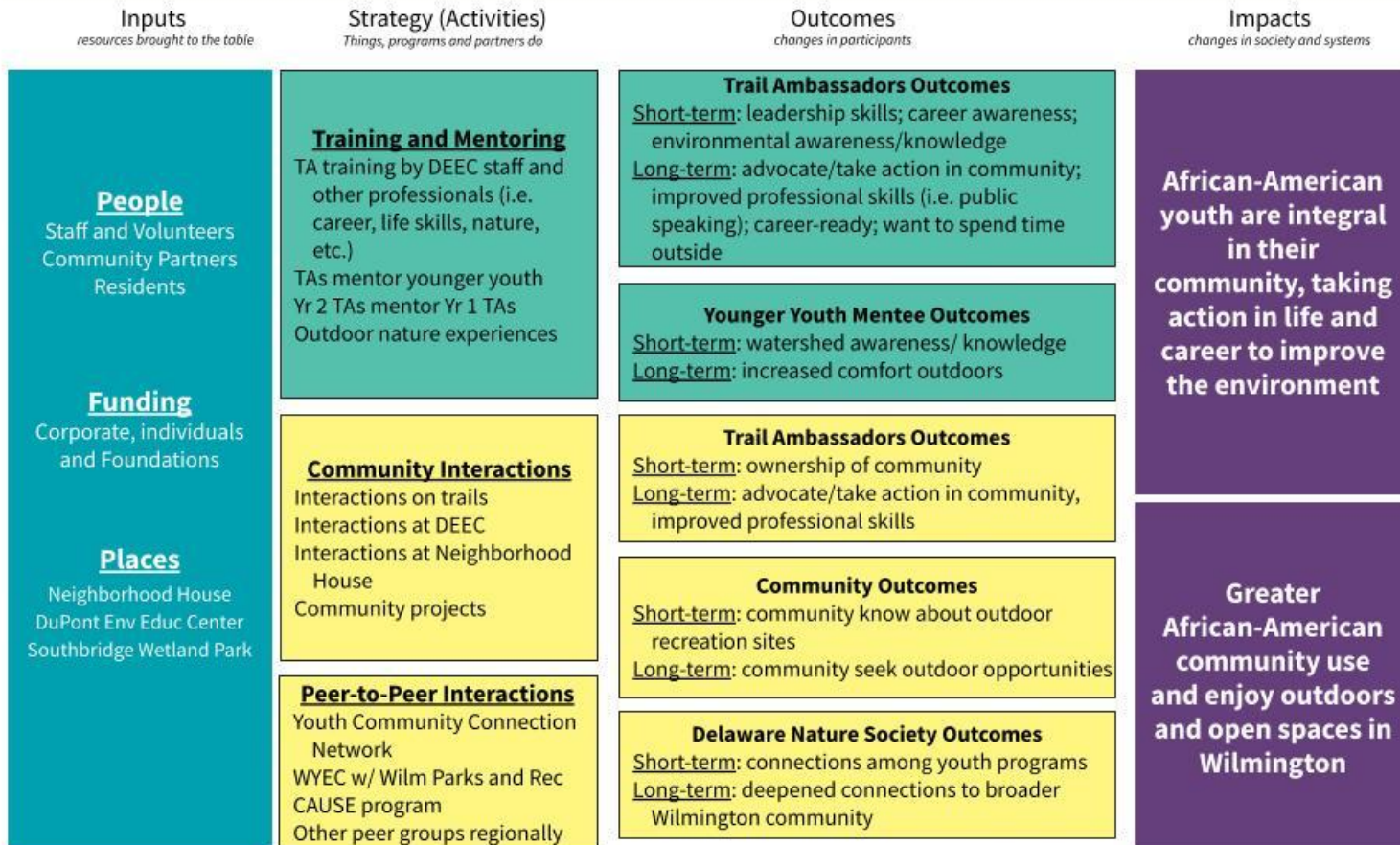
- 1. A Logic Model is a picture or roadmap of how a program or work plan will be achieved**
- 2. Through consensus building, it identifies the desired impact, and then works backward to define outcomes, activities, and inputs.**
- 3. We can borrow elements of the Logic Model to structure how the Funding Subcommittee will create a work plan**
- 4. Along the way, we can also identify where more knowledge is needed, and bring in expert speakers**

Logic Model

1. Determine Impacts - changes in society and systems that we want to see related to funding water improvements
2. Define short term and long term Outcomes - changes in funding programs
3. Identify Activities and Strategies needed for programs and partners to do
4. Name Inputs or Resources to support activities and programs

Trail Ambassadors (TA) Logic Model

The Trail Ambassador youth development program inspires youth to care for Wilmington's watersheds, creating ownership of community and public spaces, and empowering them to advocate for their community, while developing leadership and career skills.



Placement of ideas mentioned to date in the Logic Model

1. Utilize RASCL Program model - strategy/activity
2. Address Emerging Contaminants - outcome
3. Increase Investments in Underserved Communities - outcome
4. Develop less complex funding structures for GSI - strategy/activity
5. Coordinate regional CIP for water infrastructure - outcome
6. Empower community driven projects - outcome
7. Share info on funding sources - input

Inputs	Strategy (Activities)	Outcomes	Impacts
<p><u>Funding</u> Grants, Loans, Rates & Revenues</p> <p><u>People</u> Public, Private, Non-profit, and Communities</p> <p><u>Information</u> Clearing house of funding opportunities</p>	<p>Establish a RASCL Program</p>	<p>Regional CIP for Water Infrastructure</p> <p><u>Short Term:</u> <u>Medium Term:</u> <u>Long Term:</u></p>	<p>Cleaner waters are integral to the health and well being of citizens and natural ecosystems in the Delaware River Basin</p>
		<p>Addressing Emerging Contaminants</p> <p><u>Short Term:</u> <u>Medium Term:</u> <u>Long Term:</u></p>	
		<p>Empower Community Driven Projects</p> <p><u>Short Term:</u> <u>Medium Term:</u> <u>Long Term:</u></p>	<p>Increase Environmental Justice for underserved communities that have been historically subject to water-related environmental justice inequities</p>
		<p>Increased Investment in Underserved Communities</p> <p><u>Short Term:</u> <u>Medium Term:</u> <u>Long Term:</u></p>	

Inputs

*resources brought to
the table*

Strategy (Activities)

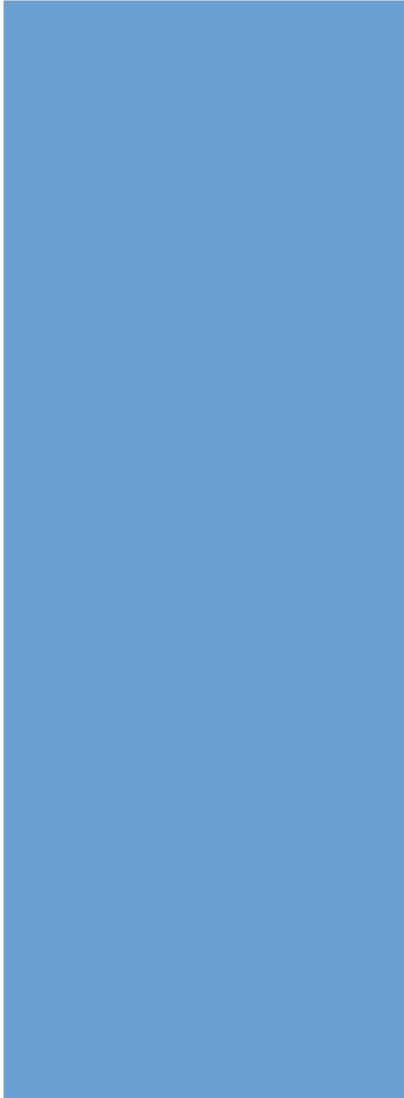
*things, programs and
partners do*

Outcomes

changes in participants

Impacts

*changes in society and
systems*



Next Steps

1. Organize feedback into our newly created Logic Model
2. Plan December meeting to continue to build out the Logic Model
3. Should we bring in speakers to inform us?
4. Are there areas we need to research more?
5. Meet again in December, 13th (10:00 - 11:30am)
6. Plan and schedule future meetings
 - a. In-person/hybrid/virtual?



watertable

thank you
for attending

Mission Statement:

To find new sources of funding to support new initiatives that do not have funding sources
Help better target existing funding sources

Develop a funding model to get more funding into the watershed that help
Underserved communities need to be an important part of our mission statement
Geography distinction is also important - urban vs. rural
How do we build a structure where communities fall through the cracks
There needs to be a network of invested community members that are part of the conversation

Impacts:

Increase financial support for underserved communities to improve their water quality and their water system management and increase access to funding

Increase funding access to applied to address water quality projects in the region and improve access to underserved communities

Achieve the fish and swim goals of the clean waters act

Add resiliency and climate change into the vocab
funding component can prioritize grant making programs
education component - how can we have the everyday electorate care/have knowledge about water quality issues (branding cross-over)
Dramatically improve water quality projects in the delaware river basin